



Many Schools – One Family  
Serving Catholic Primary Schools across England

# **Governors Continuous Professional Development and Formation Plan 2025-2026**

CELEBRATING  
30 YEARS



CATHOLIC  
PRIMARY  
PARTNERSHIP

Dear Governors,

We are delighted to serve you and your school communities by providing CPDF (Continuous Professional Development and FORMATION) to leaders at all levels. We aim to support you to help form your team to each be the best version of the person that God has called them to be. In turn, it is hoped, this will cascade to your amazing pupils. We are pleased to be serving many diocese across England and know that you will benefit from working alongside governors from across the country.

Providers:

There are some old favourites and some brand-new ones, let us know your thoughts, we use YOUR feedback to design the offer for the following year. If an old favourite isn't included this year, let us know you want them back. (We're already working on 2026-2027!) If you hear of someone amazing, based anywhere in the country, tell us. We'll get them booked.

Thank you for all you do to support Catholic Primary school across the country. We appreciate you giving your time so generously. If we can help you in any way, please get in touch.

We have included governor CPDF and sessions that you may find of interest, within this smaller brochure for governors. (There's lots more in our full CPDF brochure, available via our website, or get in touch and we will send it to you.)

Please use the hyperlinks to book your CPDF (check first with whoever is responsible for Governor CPDF in school) and we look forward to welcoming you.

Kind regards

*Julie-Anne Tallon*

**Director of the Catholic Primary Partnership**

We are passionate about servant leadership and provide excellent CPDF to ensure all stakeholders become who God has called them to be. We want to evolve constantly, so we nurture a culture of constant review, evaluation, and planning for the next steps. We build upon strengths and offer our schools the absolute best.

## What is the Partnership Vision?

### **Servant Leadership**

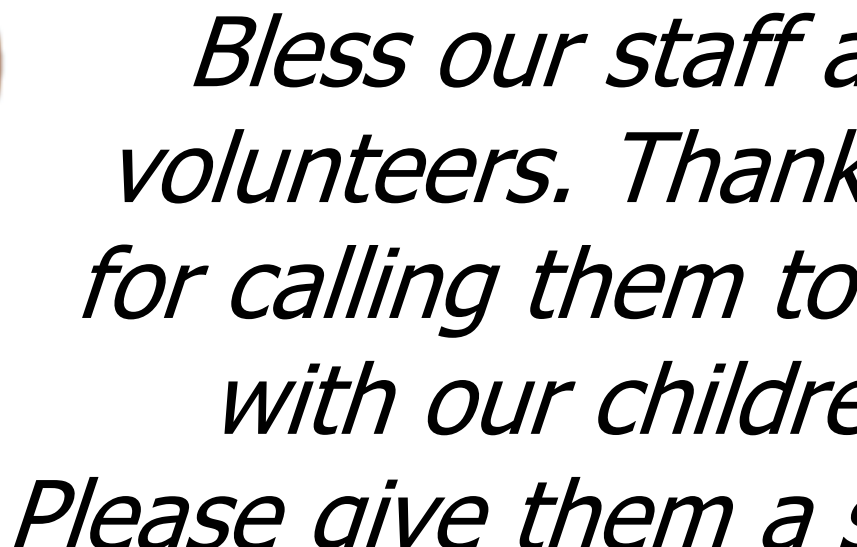
Mission integrity - a commitment to Servant Leadership; evident through interactions, service and SUPPORT to all.

### **Excellent CPDF**

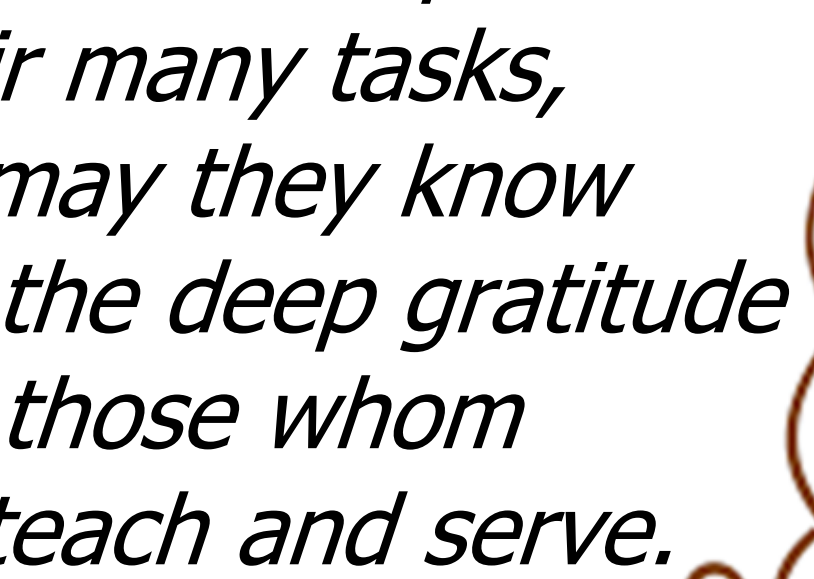
Inclusive of Leaders at all levels- developing all stakeholders to be the person God has called them to be and empowering them to develop the children in our care to achieve their best.

### **Evolving**

A culture of constant evaluation, reflection and improvement to provide the very best for our schools.



*Bless our staff and  
volunteers. Thank You  
for calling them to work  
with our children.  
Please give them a spirit of  
grace  
and compassion.  
Bless them with strength  
and endurance to perform  
their many tasks,  
and may they know  
and feel the deep gratitude  
of those whom  
they teach and serve.*



# *Marian Term*



*(Autumn 1)*

# MARIAN TERM

## (AUTUMN 1)

### September 2025

|  |   |
|--|---|
| <p><b><u>Governors update on KCSIE</u></b></p> <p><b><u>With Oliver Welsby</u></b></p> <p><b>Thursday 9<sup>th</sup> October 2025</b></p> <p>6.00pm-7.30pm</p> <p>Zoom</p> <p>#Governors</p>   | <p>This session is valuable for all governors, not just the nominated Safeguarding Governor, as all governors have 'strategic leadership responsibility for safeguarding', as outlined in KCSIE.</p> <p>This session will provide a clear update for governors as to the latest developments in terms of risk, updates on statutory guidance and KCSIE requirements from the governance perspective, and an overview of what the safeguarding team should be working on.</p> <p>To book:<br/> <a href="https://www.bcpp.org.uk/events/25-gov-kcsie">https://www.bcpp.org.uk/events/25-gov-kcsie</a></p> |
| <p><b><u>Director's note:</u></b></p> <p><i>This is a slightly longer governor's session than usual, it's because we are sharing the information and giving them guidance on what to do.</i></p> <p><i>I'd get all my governors booked on this – a non-negotiable for me (you are giving them plenty of notice).</i></p> |   |
| <p><b><u>Governors to be booked on:</u></b></p>  | <p><b><u>Cover arrangements in school:</u></b></p>  |



# Marian Term

## CPDF at a glance

If you click on the link in the description, it will take you to the information about the course.  
If you want to book, click the 'To book' link, which will take you directly to our booking website.

## September 2025

| Course title   | Date  | To book   |
|--|---|---|
| Annual Update to KCSIE<br><br>With Oliver Welsby   | Monday 1st September 2025<br><br>11:30am-12:30pm  | <a href="https://www.bcpp.org.uk/events/25-kcsie-update">https://www.bcpp.org.uk/events/25-kcsie-update</a>                       |
| Performance Management without Performance related pay<br><br>With Andrew Pilmore  | Monday 8 <sup>th</sup> September 2025<br><br>9:30am-11:00am   | <a href="https://www.bcpp.org.uk/events/25-drb-performance">https://www.bcpp.org.uk/events/25-drb-performance</a>                 |
| Safeguarding Compliance<br><br>With Oliver Welsby  | Tuesday 9th September 2025<br><br>9:30am–12:30pm  | <a href="https://www.bcpp.org.uk/events/25-safeguarding-compliance">https://www.bcpp.org.uk/events/25-safeguarding-compliance</a> |
| New to DSL-full training<br><br>With Oliver Welsby   | Tuesday 16th and Tuesday 23rd September 2025<br><br>9:00am-4:00pm   | <a href="https://www.bcpp.org.uk/events/25-new-dsl-1">https://www.bcpp.org.uk/events/25-new-dsl-1</a>                             |
| Science Leaders' Support and Development Group day 1 of 6<br><br>With Kate Redhead   | Thursday 18 <sup>th</sup> September 2025<br><br>2:00pm-3:30pm   | <a href="https://www.bcpp.org.uk/events/25-science-support-group-1">https://www.bcpp.org.uk/events/25-science-support-group-1</a> |
| Welcome the Stranger?<br><br>With Dr James Trewby of the Columban Missionaries and Steph Neville of Stories of Hope and Home<br><br>Zoom and residential | Monday 22nd September 2025<br><br>1.00pm-3.00pm<br>Session 1 (of 5)<br><br>All sessions must be attended.<br><br>Session 2 - Zoom – Monday 29 <sup>th</sup> September 2025 - 1.00pm–3.00pm<br>Session 3 – Wednesday 8th October 2025 10.00am–2:00pm<br>Face to Face: Venue to be confirmed. (It will be Birmingham) | <a href="https://www.bcpp.org.uk/events/25-welcome-stranger-1">https://www.bcpp.org.uk/events/25-welcome-stranger-1</a>           |



|  |   |   |
|--|---|---|
|  | 10:00am-2:00pm<br>Session 4 - Residential<br>Tuesday 14 <sup>th</sup> October<br>2025- Thursday 16 <sup>th</sup><br>October 2025<br>Session 5 - Zoom<br>Monday 20 <sup>th</sup> October 2025<br>1:00pm-3:00pm |   |
| DSL refresher - New to<br>DSL day 2<br><br>With Oliver Welsby                  | Tuesday 23 <sup>rd</sup> September<br>2025<br><br>9:00am-4:00pm   | <a href="https://www.bcpp.org.uk/events/25-new-dsl-2">https://www.bcpp.org.uk/events/25-new-dsl-2</a>                   |
| Me, myself and I – 1 of 3<br><br>With Ruth Swailes                             | Wednesday 24 <sup>th</sup> September<br>2025<br>4:00pm-5:00pm<br><br>Session 2 – Tuesday 7 <sup>th</sup><br>October 2025<br>Session 3 – Tuesday 21 <sup>st</sup><br>October 2025                              | <a href="https://www.bcpp.org.uk/events/25-eyfs-me-myself-1">https://www.bcpp.org.uk/events/25-eyfs-me-myself-1</a>     |
| Introduction to Behaviour<br>360<br><br>With Emma Shackleton                   | Thursday 25 <sup>th</sup> September<br>2025.<br><br>9:30am-10.15am  | <a href="https://www.bcpp.org.uk/events/25-behaviour-360">https://www.bcpp.org.uk/events/25-behaviour-360</a>           |
| Welcome the Stranger? –<br>Day 2 of 5<br><br>James Trewby and Steph<br>Neville | Session 2 - Zoom –<br>Monday 29 <sup>th</sup> September<br>2025 - 1.00pm-3.00pm   | <a href="https://www.bcpp.org.uk/events/25-welcome-stranger-2">https://www.bcpp.org.uk/events/25-welcome-stranger-2</a> |
| What you need to know<br>about Reception<br><br>With Ruth Swailes              | Tuesday 30 <sup>th</sup> September<br>2025<br><br>9:30am-12:30pm  | <a href="https://www.bcpp.org.uk/events/25-reception-ntk">https://www.bcpp.org.uk/events/25-reception-ntk</a>           |

## October 2025

| Course title  | Date  | To book   |
|---|---|---|
| HT Support Group day 1<br><br>With Clare Cheetham                         | Thursday 2 <sup>nd</sup> October 2025<br><br>9:30am-12:30pm | <a href="https://www.bcpp.org.uk/events/25-head-support-group-1">https://www.bcpp.org.uk/events/25-head-support-group-1</a>           |
| DRB Leadership Briefing<br><br>With Andrew Pilmore                        | Monday 6 <sup>th</sup> October 2025<br><br>10:00am-12:30pm  | <a href="https://www.bcpp.org.uk/events/25-drb-briefing-1">https://www.bcpp.org.uk/events/25-drb-briefing-1</a>                       |
| Computing Leaders' Support Group<br>With Sharon Cufflin and<br>Vikki Bott | Monday 6 <sup>th</sup> October 2025<br><br>1:15pm-3:15pm    | <a href="https://www.bcpp.org.uk/events/25-computing-support-group-1">https://www.bcpp.org.uk/events/25-computing-support-group-1</a> |
| Attendance<br><br>with Wayne Harris                                       | Tuesday 7 <sup>th</sup> October 2025<br><br>9:30am-10:30am  | <a href="https://www.bcpp.org.uk/events/25-inclusive-attendance">https://www.bcpp.org.uk/events/25-inclusive-attendance</a>           |



|   |  |   |
|---|--|---|
| Me, myself and I – 2 of 3<br>With Ruth Swailes  | Tuesday 7 <sup>th</sup> October 2025<br>4:00pm-5:00pm  | <a href="https://www.bcpp.org.uk/events/25-eyfs-me-myself-2">https://www.bcpp.org.uk/events/25-eyfs-me-myself-2</a>               |
| Welcome the Stranger?<br>day 3 of 5<br>With James Trewby and<br>Steph Neville                   | Session 3 – Wednesday<br>8th October 2025<br>10.00am–2:00pm<br>Face to Face venue to be<br>confirmed   | <a href="https://www.bcpp.org.uk/events/25-welcome-stranger-3">https://www.bcpp.org.uk/events/25-welcome-stranger-3</a>           |
| Maths Leaders' Support<br>and Development Group<br><br>With Nathan Crook                        | Thursday 9 <sup>th</sup> October 2025<br><br>9:30am-12:00pm<br><br>Session 2<br>Wednesday 11th February<br>2026<br>1:30pm-4:00pm<br><br>Session 3<br>Wednesday 29th April<br>2026<br>1:30pm-4:00pm | <a href="https://www.bcpp.org.uk/events/25-maths-support-group-1">https://www.bcpp.org.uk/events/25-maths-support-group-1</a>     |
| KCSIE for Governors<br><br>With Oliver Welsby   | Thursday 9 <sup>th</sup> October 2025<br><br>6:00pm-7:30pm   | <a href="https://www.bcpp.org.uk/events/25-gov-kcsie">https://www.bcpp.org.uk/events/25-gov-kcsie</a>                             |
| English Leaders' Support<br>and Development Group<br><br>With Susie Spolander                   | Monday 13 <sup>th</sup> October 2025<br><br>2:30pm-3:30pm  | <a href="https://www.bcpp.org.uk/events/25-english-support-group-1">https://www.bcpp.org.uk/events/25-english-support-group-1</a> |
| Welcome the Stranger?<br>Residential<br><br>With James Trewby and<br>Steph Neville              | Session 4 - Residential<br>Tuesday 14 <sup>th</sup> October<br>2025- Thursday 16 <sup>th</sup><br>October 2025   | <a href="https://www.bcpp.org.uk/events/25-welcome-stranger-4">https://www.bcpp.org.uk/events/25-welcome-stranger-4</a>           |
| PE Leaders' Support and<br>Development Group<br><br>With Dan Wilson from<br>Beyond the Physical | Tuesday 14 <sup>th</sup> October 2025<br><br>1:30pm-3:00pm   | <a href="https://www.bcpp.org.uk/events/25-pe-support-group-1">https://www.bcpp.org.uk/events/25-pe-support-group-1</a>           |
| Welcome the Stranger?<br><br>With James Trewby and<br>Steph Neville                             | Monday 20 <sup>th</sup> October 2025<br>1:00pm–3:00pm  | <a href="https://www.bcpp.org.uk/events/25-welcome-stranger-5">https://www.bcpp.org.uk/events/25-welcome-stranger-5</a>           |
| Me, myself and I – 3 of 3<br>With Ruth Swailes  | Tuesday 21 <sup>st</sup> October 2025<br><br>4:00pm-5:00pm   | <a href="https://www.bcpp.org.uk/events/25-eyfs-me-myself-3">https://www.bcpp.org.uk/events/25-eyfs-me-myself-3</a>               |

# Remembrance term



(Autumn 2)

# REMEMBRANCE TERM

## (AUTUMN 2)

# November 2025

### **Reminders for good governance**

### **Dr Bogusia Matusiak-Varley**

Thursday 13<sup>th</sup> November 2025

6:00pm-7:00pm

Zoom

For: Governors

We will discuss the practicalities of undertaking the core functions of governance, providing vision, ethos and strategic direction.

- Holding leaders to account
- Executing equality of opportunity
- Knowing the school's strengths and areas for improvement

To book:

<https://www.bcpp.org.uk/events/25-gov-governance>

### **Director's note:**

*Governors have requested more training from Bogusia. It speaks for itself. She delivers the best.*

### **Staff to be booked on:**

### **Cover arrangements in school:**



# Remembrance Term

## CPDF at a glance

If you click on the link in the description, it will take you to the information about the course.  
If you want to book, click the 'To book' link, which will take you directly to our booking website.

## November 2025

| Course title  | Date                                    | To book   |
|---|---|---|
| EYFS Leader Support Group                                 | Monday 3 <sup>rd</sup> November 2025    | <a href="https://www.bcpp.org.uk/events/25-eyfs-support-group-1">https://www.bcpp.org.uk/events/25-eyfs-support-group-1</a>           |
| With Ruth Swailes   | 1:15pm-2:45pm                           |   |
| Building Positive Relationships                           | Thursday 6 <sup>th</sup> November 2025  | <a href="https://www.bcpp.org.uk/events/25-ls-positive-relationships">https://www.bcpp.org.uk/events/25-ls-positive-relationships</a> |
| With Helen Guest  | 10:30am-11:30am                         |   |
| Managing Challenging Conversations with Parents           | Thursday 6 <sup>th</sup> November 2025  | <a href="https://www.bcpp.org.uk/events/25-challenging-conversations">https://www.bcpp.org.uk/events/25-challenging-conversations</a> |
| With Helen Guest  | 1:30pm-3:00pm                           |   |
| Developing a positive mindset for pupils                  | Monday 10 <sup>th</sup> November 2025   | <a href="https://www.bcpp.org.uk/events/25-positive-mindset">https://www.bcpp.org.uk/events/25-positive-mindset</a>                   |
| With Rachel Chilver                                       | 1:30pm-3:00pm                           |   |
| Science Leaders' Support and Development Group day 2 of 6 | Tuesday 11 <sup>th</sup> November 2025  | <a href="https://www.bcpp.org.uk/events/25-science-support-group-2">https://www.bcpp.org.uk/events/25-science-support-group-2</a>     |
| With Kate Redhead   | 2:00pm-3:30pm                           |   |
| EYFS<br>Let's get reading and writing sorted!             | Thursday 13 <sup>th</sup> November 2025 | <a href="https://www.bcpp.org.uk/events/25-eyfs-reading-writing">https://www.bcpp.org.uk/events/25-eyfs-reading-writing</a>           |
| With Dr Bogusia Matusiak-Varley                           | 9:00am-12:00pm                          |   |
| Reminders for good governance                             | Thursday 13 <sup>th</sup> November 2025 | <a href="https://www.bcpp.org.uk/events/25-gov-governance">https://www.bcpp.org.uk/events/25-gov-governance</a>                       |
| With Dr Bogusia Matusiak-Varley                           | 6:00pm-7:00pm                           |   |
| Early Writing, Write from the start                       | Monday 17 <sup>th</sup> November 2025   | <a href="https://www.bcpp.org.uk/events/25-early-writing-1">https://www.bcpp.org.uk/events/25-early-writing-1</a>                     |
| With Ruth Swailes   | 1:00pm-2:30pm                           |   |

|  |   |   |
|--|---|---|
| SENDSCO Support and Development Group  | Tuesday 25 <sup>th</sup> November 2025                                      | <a href="https://www.bcpp.org.uk/events/25-senco-support-group-1">https://www.bcpp.org.uk/events/25-senco-support-group-1</a> |
| Session 1 of 3                         | Future dates:   |   |
| With Matt McArthur                     | Thursday 19 <sup>th</sup> March 2026<br>Thursday 18 <sup>th</sup> June 2026 |   |
|  | 1:30pm-5:30pm   |   |
| HT Support and Development Group Day 2 | Thursday 27 <sup>th</sup> November 2025                                     | <a href="https://www.bcpp.org.uk/events/25-head-support-group-2">https://www.bcpp.org.uk/events/25-head-support-group-2</a>   |
| With Clare Cheetham                    | 9:30am-12:30pm  |   |
| Headteacher Get Together               | Friday 28 <sup>th</sup> November 2025                                       | <a href="https://www.bcpp.org.uk/events/25-head-face2face-1">https://www.bcpp.org.uk/events/25-head-face2face-1</a>           |
| At Priory Tennis Club                  | 9:00am-1:00pm   |   |

## December 2025

| Course title                                   | Date                                   | To book   |
|--|--|---|
| Early Writing, write from the start            | Tuesday 2 <sup>nd</sup> December 2025  | <a href="https://www.bcpp.org.uk/events/25-early-writing-2">https://www.bcpp.org.uk/events/25-early-writing-2</a>                 |
| With Ruth Swailes                              | 1:00pm-2:30pm                          |   |
| English Leaders' Support and Development Group | Thursday 4 <sup>th</sup> December 2025 | <a href="https://www.bcpp.org.uk/events/25-english-support-group-2">https://www.bcpp.org.uk/events/25-english-support-group-2</a> |
| With Susie Spolander                           | 2:00pm-3:30pm                          |   |





# Candlemas Term



(Spring 1)

# Candlemas Term CPDF at a glance

If you click on the link in the description, it will take you to the information about the course.  
If you want to book, click the 'To book' link, which will take you directly to our booking website.

## January 2026

| Course title   | Date   | To book   |
|--|--|---|
| STAFF MEETING SESSION<br>Whole Staff Online safety annual update<br><br>With Oliver Welsby | Tuesday 13th January 2026<br><br>3:45pm-4:45pm               | <a href="https://www.bcpp.org.uk/events/25-staff-online-safety">https://www.bcpp.org.uk/events/25-staff-online-safety</a>         |
| PE Leaders' Support and Development Group<br><br>With Dan Wilson From Beyond the Physical  | Wednesday 14 <sup>th</sup> January 2026<br><br>1:30pm-3:30pm | <a href="https://www.bcpp.org.uk/events/25-pe-support-group-2">https://www.bcpp.org.uk/events/25-pe-support-group-2</a>           |
| EYFS Leaders' Support Group<br><br>With Ruth Swailes                                       | Thursday 15 <sup>th</sup> January 2026<br><br>1:15pm-2:45pm  | <a href="https://www.bcpp.org.uk/events/25-eyfs-support-group-2">https://www.bcpp.org.uk/events/25-eyfs-support-group-2</a>       |
| An effective academic diet for the lowest 20%<br><br>With Dr Bogusia Matusiak-Varley       | Tuesday 20 <sup>th</sup> January 2026<br><br>9:00am-12:00pm  | <a href="https://www.bcpp.org.uk/events/25-academic-diet">https://www.bcpp.org.uk/events/25-academic-diet</a>                     |
| Head Masters of Stress<br><br>With Helen Dos Santos  | Thursday 22 <sup>nd</sup> January 2026<br><br>9:30am-10:30am | <a href="https://www.bcpp.org.uk/events/25-head-stress">https://www.bcpp.org.uk/events/25-head-stress</a>                         |
| Science Leaders' Support and Development Group day 3 of 6<br><br>With Kate Redhead         | Thursday 22 <sup>nd</sup> January 2026<br><br>2.00pm-3:30pm  | <a href="https://www.bcpp.org.uk/events/25-science-support-group-3">https://www.bcpp.org.uk/events/25-science-support-group-3</a> |
| HT Support and Development Group day 3 of 5<br><br>With Clare Cheetham                     | Tuesday 27 <sup>th</sup> January 2026<br><br>9:30am-12:30pm  | <a href="https://www.bcpp.org.uk/events/25-head-support-group-3">https://www.bcpp.org.uk/events/25-head-support-group-3</a>       |
| English Leaders' Support and Development Group<br><br>With Susie Spolander                 | Thursday 29 <sup>th</sup> January 2026<br><br>2:00pm-3:30pm  | <a href="https://www.bcpp.org.uk/events/25-english-support-group-3">https://www.bcpp.org.uk/events/25-english-support-group-3</a> |



# February 2026

| Course title  | Date   | To book   |
|---|--|---|
| Understanding anger and de-escalation<br><br>With Helen Guest                                   | Tuesday 3 <sup>rd</sup> February 2026<br><br>10:30am–11:30am   | <a href="https://www.bcpp.org.uk/events/25-understanding-anger">https://www.bcpp.org.uk/events/25-understanding-anger</a>             |
| Supporting girls with Autism<br><br>With Helen Guest  | Tuesday 3 <sup>rd</sup> February 2026<br><br>1:30pm – 3:30pm   | <a href="https://www.bcpp.org.uk/events/25-girls-autism">https://www.bcpp.org.uk/events/25-girls-autism</a>                           |
| DRB Leadership Briefing<br><br>With Andrew Pilmore  | Thursday 5 <sup>th</sup> February 2026<br><br>10:00am-12:30pm  | <a href="https://www.bcpp.org.uk/events/25-drb-briefing-2">https://www.bcpp.org.uk/events/25-drb-briefing-2</a>                       |
| Maths for TAs - How TAs can support pupils in maths<br><br>With Helen Owens                     | Thursday 5 <sup>th</sup> February 2026<br><br>1:15pm-3:00pm  | <a href="https://www.bcpp.org.uk/events/25-ta-maths">https://www.bcpp.org.uk/events/25-ta-maths</a>                                   |
| SEND in EYFS, Effective Provision & Practice<br><br>With Rachel Wilks                           | Monday 9 <sup>th</sup> February 2026<br><br>1:00pm-3:00pm  | <a href="https://www.bcpp.org.uk/events/25-eyfs-send">https://www.bcpp.org.uk/events/25-eyfs-send</a>                                 |
| Computing Leaders' Support and Development Group<br><br>With Sharon Cufflin and Vikki Woodfield | Tuesday 10 <sup>th</sup> February 2026<br><br>1:15pm-3:15pm  | <a href="https://www.bcpp.org.uk/events/25-computing-support-group-2">https://www.bcpp.org.uk/events/25-computing-support-group-2</a> |
| Maths Leaders' Support and Development Group<br><br>With Nathan Crook                           | Wednesday 11 <sup>th</sup> February 2026<br><br>1:30pm-4:00pm<br><br>Session 3<br>Wednesday 29 <sup>th</sup> April 2026<br>1:30pm-4:00pm | <a href="https://www.bcpp.org.uk/events/25-maths-support-group-2">https://www.bcpp.org.uk/events/25-maths-support-group-2</a>         |



# Lenten Term



(Spring 2)

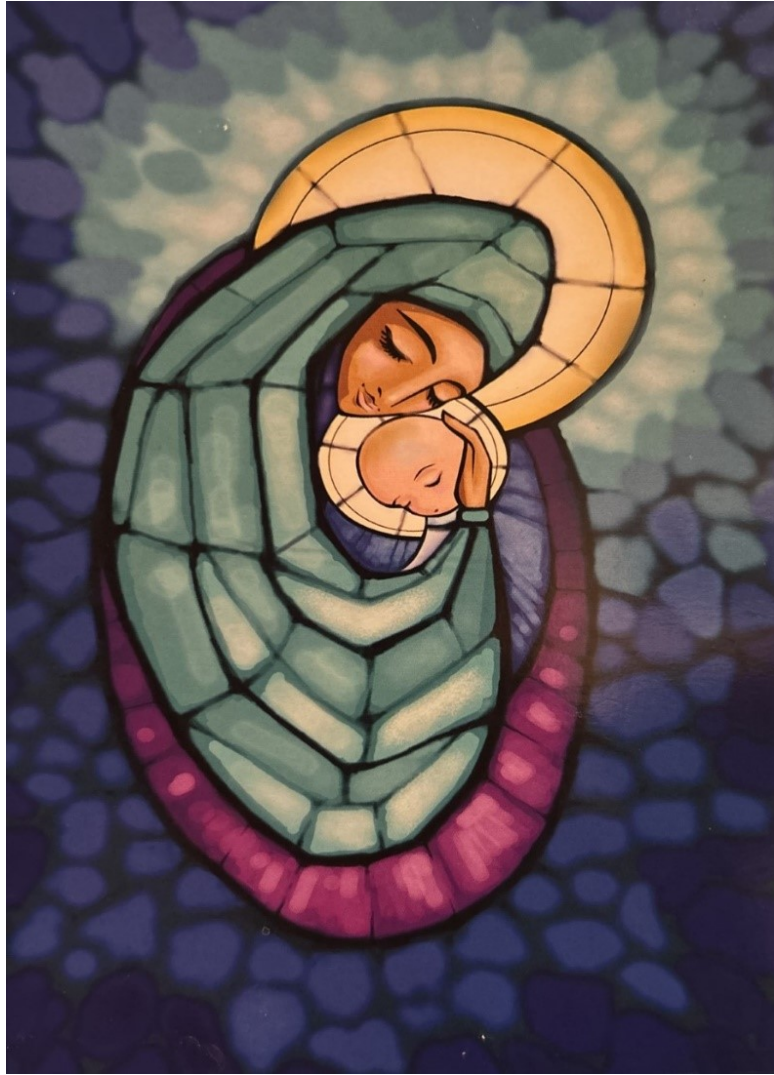
# Lenten Term CPDF at a glance

If you click on the link in the description, it will take you to the information about the course.  
If you want to book, click the 'To book' link, which will take you directly to our booking website.

## March 2026

| Course title  | Date   | To book   |
|---|--|---|
| Staff Meeting – The Stress Proof Brain: Practical Tools for Wellbeing & Self-Care<br><br>With Hugo Metcalfe | Monday 2 <sup>nd</sup> March 2026<br><br>3:45pm-4:45pm   | <a href="https://www.bcpp.org.uk/events/25-staff-stress">https://www.bcpp.org.uk/events/25-staff-stress</a>                       |
| Interventions vs Outerventions<br><br>With Ruth Swailes   | Tuesday 10 <sup>th</sup> March 2026<br><br>1:00pm-3:00pm   | <a href="https://www.bcpp.org.uk/events/25-interventions">https://www.bcpp.org.uk/events/25-interventions</a>                     |
| Writing Moderation<br><br>With Susie Spolander  | Thursday 12 <sup>th</sup> March 2026<br><br>Face to face All day   | <a href="https://www.bcpp.org.uk/events/25-writing-moderation">https://www.bcpp.org.uk/events/25-writing-moderation</a>           |
| HT Support and Development Group day 4 of 5<br><br>With Clare Cheetham                                      | Friday 13 <sup>th</sup> March 2026<br><br>9:30am-12:30pm   | <a href="https://www.bcpp.org.uk/events/25-head-support-group-4">https://www.bcpp.org.uk/events/25-head-support-group-4</a>       |
| Science Leaders' Support and Development Group day 4 of 6<br><br>With Kate Redhead                          | Monday 16 <sup>th</sup> March 2026<br><br>2:30pm-3:30pm  | <a href="https://www.bcpp.org.uk/events/25-science-support-group-4">https://www.bcpp.org.uk/events/25-science-support-group-4</a> |
| School Development Planning and demonstrating impact<br><br>With Dr Bogusia Matusiak-Varley                 | Tuesday 17 <sup>th</sup> March 2026<br><br>Zoom 9:00am-12:00pm   | <a href="https://www.bcpp.org.uk/events/25-sdp-planning">https://www.bcpp.org.uk/events/25-sdp-planning</a>                       |
| English Leaders' Support and Development Group<br><br>With Susie Spolander                                  | Wednesday 18 <sup>th</sup> March 2026<br><br>2:00pm-3:30pm   | <a href="https://www.bcpp.org.uk/events/25-english-support-group-4">https://www.bcpp.org.uk/events/25-english-support-group-4</a> |
| SENDSCO Support and Development Group<br><br>Session 2 of 3<br><br>With Matt McArthur                       | Thursday 19 <sup>th</sup> March 2026<br><br>Future dates:<br>Thursday 18 <sup>th</sup> June 2026<br><br>Time 1:30pm-5:30pm | <a href="https://www.bcpp.org.uk/events/25-senco-support-group-2">https://www.bcpp.org.uk/events/25-senco-support-group-2</a>     |
| Headteacher Get together<br><br>At Priory Tennis Club   | Friday 20 <sup>th</sup> March 2026<br><br>9:00am-1:00pm  | <a href="https://www.bcpp.org.uk/events/25-head-face2face-1">https://www.bcpp.org.uk/events/25-head-face2face-1</a>               |

# Rosary Term



(Summer 1)

# Rosary Term

## CPDF at a glance

If you click on the link in the description, it will take you to the information about the course.  
If you want to book, click the 'To book' link, which will take you directly to our booking website.

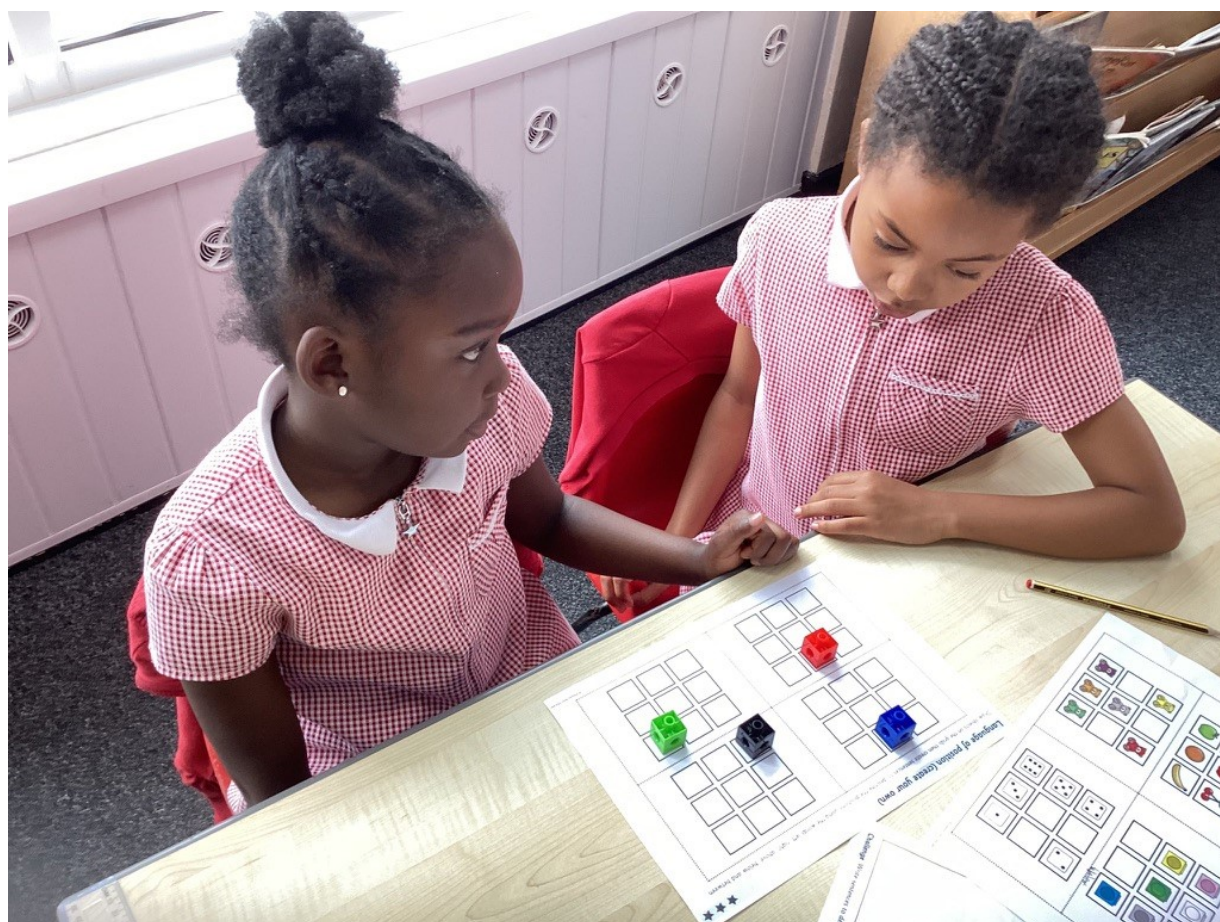
## April 2026

| Course title  | Date   | To book   |
|---|--|---|
| Learning in EYFS & KS1, Providing Effective Support<br><br>With Rachel Wilks                                | Monday 20th April 2026<br><br>1:00pm-3:00pm                | <a href="https://www.bcpp.org.uk/events/25-learning-eyfs-ks1">https://www.bcpp.org.uk/events/25-learning-eyfs-ks1</a>             |
| Confidently Teach Music: Simple and Fun Strategies for Every Classroom Teacher<br><br>With 'Sing Education' | Tuesday 21 <sup>st</sup> April 2026<br><br>1:30pm-3:00pm   | <a href="https://www.bcpp.org.uk/events/25-teaching-music">https://www.bcpp.org.uk/events/25-teaching-music</a>                   |
| PE Leaders' Support and Development Group<br><br>Dan Wilson From Beyond the Physical                        | Thursday 23 <sup>rd</sup> April 2026<br><br>1:30pm-3:30pm  | <a href="https://www.bcpp.org.uk/events/25-pe-support-group-3">https://www.bcpp.org.uk/events/25-pe-support-group-3</a>           |
| Science Leaders' Support and Development Group day 5 of 6<br><br>With Kate Redhead                          | Monday 27 <sup>th</sup> April 2026<br><br>2:00pm-3:30pm    | <a href="https://www.bcpp.org.uk/events/25-science-support-group-5">https://www.bcpp.org.uk/events/25-science-support-group-5</a> |
| Engaging Pupils in Play<br><br>With Helen Guest   | Tuesday 28 <sup>th</sup> April 2026<br><br>10:30am-11:30am | <a href="https://www.bcpp.org.uk/events/25-pupils-in-play">https://www.bcpp.org.uk/events/25-pupils-in-play</a>                   |
| Pathological Demand Avoidance (PDA)<br><br>With Helen Guest   | Tuesday 28 <sup>th</sup> April 2026<br><br>1:30pm-3:30pm   | <a href="https://www.bcpp.org.uk/events/25-pda">https://www.bcpp.org.uk/events/25-pda</a>   |
| Maths Leaders' Support and Development Group<br><br>With Nathan Crook                                       | Wednesday 29 <sup>th</sup> April 2026<br><br>1:30pm-4:00pm | <a href="https://www.bcpp.org.uk/events/25-maths-support-group-3">https://www.bcpp.org.uk/events/25-maths-support-group-3</a>     |
| HT Support and Development Group day 5 of 5<br><br>With Clare Cheetham                                      | Thursday 30 <sup>th</sup> April 2026<br><br>9:30am-12:30pm | <a href="https://www.bcpp.org.uk/events/25-head-support-group-5">https://www.bcpp.org.uk/events/25-head-support-group-5</a>       |



# May 2026

| Course title   | Date  | To book   |
|--|---|---|
| EYFS Leader Support Group                                  | Thursday 7 <sup>th</sup> May 2026<br>1:15pm-2:45pm      | <a href="https://www.bcpp.org.uk/events/25-eyfs-support-group-3">https://www.bcpp.org.uk/events/25-eyfs-support-group-3</a> |
| With Ruth Swailes  |   |   |
| Mass to Celebrate 30 years of Catholic Primary Partnership | Wednesday 20 <sup>th</sup> May 2026<br>11.00am – 2.00pm | <a href="https://www.bcpp.org.uk/events/25-head-mass">https://www.bcpp.org.uk/events/25-head-mass</a>                       |
| At Newman University Chapel                                |   |   |



# Trinity Term



x

(Summer 2)



# Trinity Term CPDF at a glance

If you click on the link in the description, it will take you to the information about the course.  
If you want to book, click the 'To book' link, which will take you directly to our booking website.

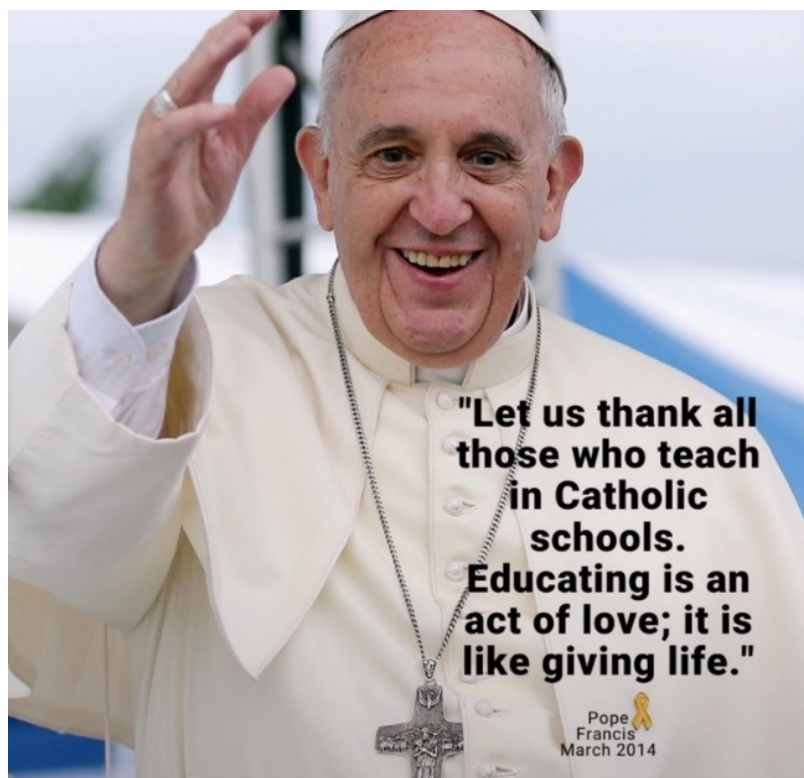
## June 2026

| Course title   | Date  | To book   |
|--|---|---|
| History- linking together the histories we teach<br><br>With Stuart Tiffany (Mr T does history)                  | Thursday, 3 <sup>rd</sup> June 2026<br><br>9:00am-12:00pm                 | <a href="https://www.bcpp.org.uk/events/25-history">https://www.bcpp.org.uk/events/25-history</a>                                     |
| Headteacher Residential<br><br>Lea Marston Hotel   | Thursday 4 <sup>th</sup> and Friday 5 <sup>th</sup> June 2026<br>Full Day | <a href="https://www.bcpp.org.uk/events/25-head-residential">https://www.bcpp.org.uk/events/25-head-residential</a>                   |
| DRB Leadership Briefing – Session 3 of 3<br><br>With Andrew Pilmore  | Monday 8 <sup>th</sup> June 2026<br><br>10:00am-12:30pm                   | <a href="https://www.bcpp.org.uk/events/25-drb-briefing-3">https://www.bcpp.org.uk/events/25-drb-briefing-3</a>                       |
| Provision in EYFS & KS1<br>Getting it Right<br><br>With Rachel Wilkes  | Tuesday, 9 <sup>th</sup> June 2026<br><br>1:00pm-3:00pm                   | <a href="https://www.bcpp.org.uk/events/25-eyfs-provision">https://www.bcpp.org.uk/events/25-eyfs-provision</a>                       |
| English Leaders' Support and Development Group – Session 5 of 5<br><br>With Susie Spolander                      | Thursday 11 <sup>th</sup> June 2026<br><br>2:00pm-3:30pm                  | <a href="https://www.bcpp.org.uk/events/25-english-support-group-5">https://www.bcpp.org.uk/events/25-english-support-group-5</a>     |
| Computing Leaders' Support and Development Group – Session 3 of 3<br><br>With Sharon Cufflin and Vikki Woodfield | Monday 15 <sup>th</sup> June 2026<br><br>1:15pm-3:15pm                    | <a href="https://www.bcpp.org.uk/events/25-computing-support-group-3">https://www.bcpp.org.uk/events/25-computing-support-group-3</a> |
| Science Leaders' Support and Development Group day 6 of 6<br><br>With Kate Redhead                               | Tuesday 16 <sup>th</sup> June 2026<br><br>2:00pm-3:30pm                   | <a href="https://www.bcpp.org.uk/events/25-science-support-group-6">https://www.bcpp.org.uk/events/25-science-support-group-6</a>     |
| Identifying School Development Priorities<br><br>With Clare Cheetham   | Thursday 18 <sup>th</sup> June 2026<br><br>9:30am-12.00pm                 | <a href="https://www.bcpp.org.uk/events/25-sdp-priorities">https://www.bcpp.org.uk/events/25-sdp-priorities</a>                       |
| SENDCO Support and Development Group - Session 3 of 3<br><br>With Matt McArthur                                  | Thursday 18 <sup>th</sup> June 2026<br><br>1:30pm-5:30pm                  | <a href="https://www.bcpp.org.uk/events/25-senco-support-group-3">https://www.bcpp.org.uk/events/25-senco-support-group-3</a>         |

# July 2026

| Course title  | Date  | To book   |
|---|---|---|
| Writing the School Development Plan<br>Clare Cheetham | Thursday 2 <sup>nd</sup> July 2026<br>9:30am-3:30pm | <a href="https://www.bcpp.org.uk/events/25-sdp-writing">https://www.bcpp.org.uk/events/25-sdp-writing</a>           |
| Maths Moderation<br>With Helen Owens                  | Friday 10 <sup>th</sup> July 2026<br>9:00am-3:30pm  | <a href="https://www.bcpp.org.uk/events/25-maths-moderation">https://www.bcpp.org.uk/events/25-maths-moderation</a> |

| Colour Code Key                    |  |
|------------------------------------|--|
| <b>Catholic Life</b>               |  |
| <b>Leadership &amp; Management</b> |  |
| <b>Curriculum</b>                  |  |
| <b>Governors</b>                   |  |
| <b>Staff Meeting</b>               |  |



## *The small print (it is not actually small)*

- Always get approval from the person responsible for the inset in your school before booking online.
- One-form entry schools get one free place on every course. Two-form entry schools get two free places on every course. Three-form entry schools get three places on every course.
- Additional places can be purchased. £25 for online and £40 for face-to-face.
- Governor CPDF places are £15 each.
- Some courses have additional charges, as stated in the CPDF plan.
- Failure to attend a pre-booked place will incur a charge. (£40 for a Zoom course and £60 for a Face-to-Face course.)
- Failure to attend residential or cancellation less than 2 weeks before will result in full charge.
- Cancellation of a place must take place 5 working days before session or charge incurred.
- Zoom links will be sent to delegates in advance of CPDF, please do a tech check before the day and contact us if any issues.
- **Please ensure your computer has a working camera AND a working microphone.**
- Places to be booked via the website. Any problems, questions, queries  
Email [s.cope@newman.ac.uk](mailto:s.cope@newman.ac.uk).
- Not turning your camera on (when we know you have one) is just rude. There, we said it.  
**Please be fully present and attentive in sessions.**

Do not hesitate to get in touch if you have any questions.

Telephone: 0121 476 3415

Email: [s.cope@newman.ac.uk](mailto:s.cope@newman.ac.uk)  
[j.tallon@newman.ac.uk](mailto:j.tallon@newman.ac.uk)