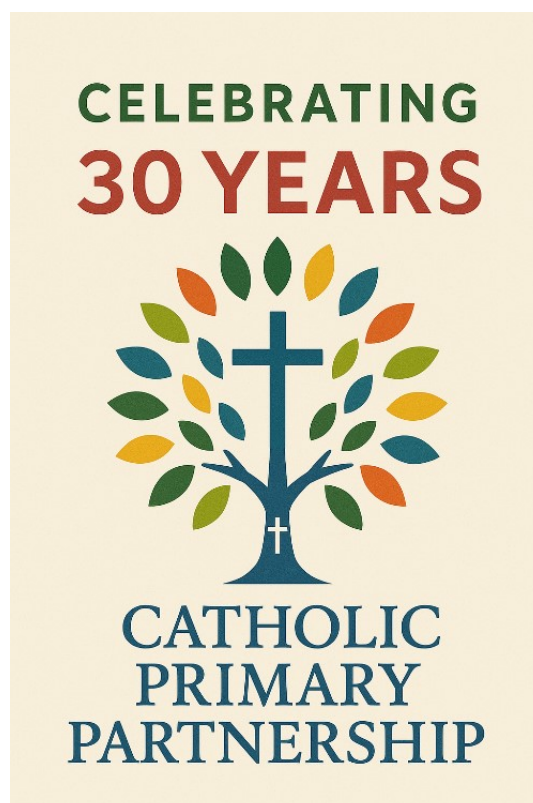




Many Schools – One Family  
Serving Catholic Primary Schools across England

# **Catholic Life Continuous Professional Development and Formation Plan 2025-2026**



## Dear School Leaders,

We are pleased to continue supporting you and your school communities by providing high-quality CPDF (Continuous Professional Development and Formation) for leaders at all levels. Our goal is to help you and your teams grow into the best versions of the people God has called you to be, with the hope that this commitment will inspire and positively impact your wonderful pupils.

### CPDF Brochure Update

In response to your feedback, we have refined the layout of our CPDF brochure. All sessions are now listed in *date order* rather than by general headings. We hope this new format makes it easier for you to plan and select sessions that align with your school's needs.

### Providers: Tell Us What You Need!

This year's CPDF offer includes a mix of well-loved favourites and exciting new providers. Your feedback is invaluable in shaping next year's programme, so please let us know:

- If an old favourite is missing, you would like them to return.
- If you have heard of an extraordinary speaker or facilitator based in the UK or internationally, share their details, and we'll do our best to book them!

### DRB Leadership Briefings

We are thrilled to continue offering access to DRB Leadership Briefings—a 'one-stop shop' for all the essential updates, ensuring 'they do the reading, so you don't have to!' We can provide a fantastic offer for schools subscribing to the Catholic Primary Partnership in 2025-26: access to the termly *online* DRB Leadership Briefings and weekly updates/support for just an additional **£330 for the year**. This is exceptional value, as the usual cost for DRB is £140 per term (£420 per year).

Call me if you're unfamiliar with DRB briefings and want to know more. I'd be happy to explain them to you. Alternatively, contact us if you'd like us to arrange this for you.

### Supporting Collaboration

For those in a MAC/MAT/CMAT or any other school collaboration, why not maximise the impact of your Support and Development Groups? We can help facilitate middle leader meetings immediately after these sessions—just let us know, and we'll work with you to make it happen.

### Our Vision

Our vision guides everything we do. We *believe in it, review it, live it, and report it* to our Management Board. This is our way of ensuring we deliver the absolute best for you and your school communities. Your feedback helps us refine this mission, so please share your thoughts.

In the meantime, please use the hyperlinks in the brochure to book your CPDF sessions. We look forward to welcoming you and your teams.

With every blessing,

*Julie-Anne Tallon*

**Director of the Catholic Primary Partnership**

We are passionate about servant leadership and provide excellent CPDF to ensure all stakeholders become who God has called them to be. We want to evolve constantly, so we nurture a culture of constant review, evaluation, and planning for the next steps. We build upon strengths and offer our schools the absolute best.

## What is the Partnership Vision?

### **Servant Leadership**

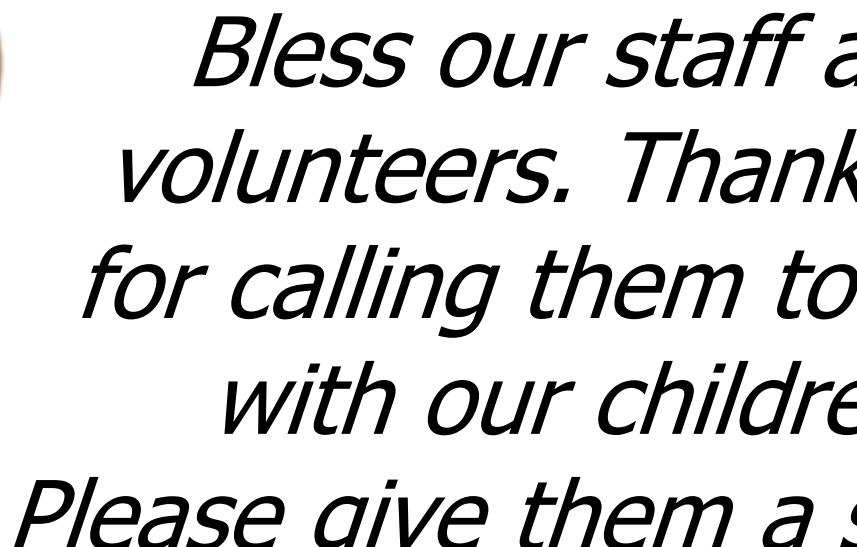
Mission integrity - a commitment to Servant Leadership; evident through interactions, service and SUPPORT to all.

### **Excellent CPDF**

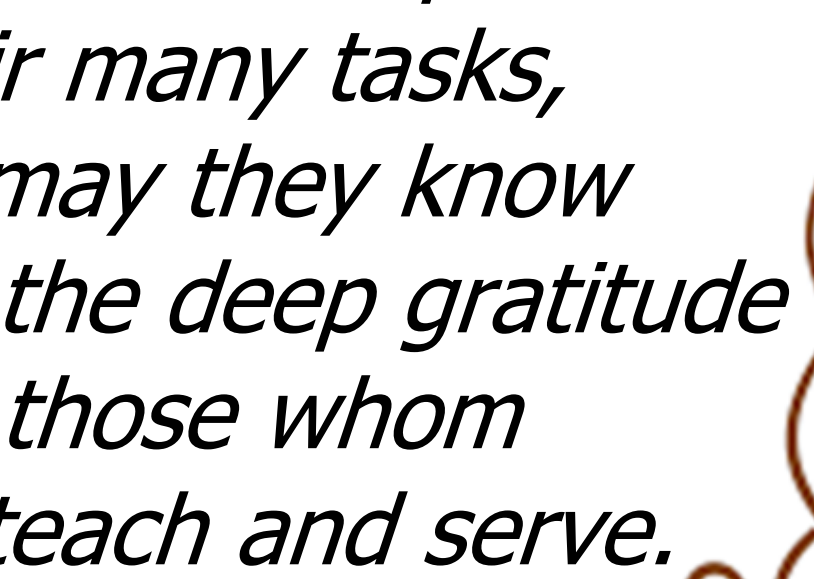
Inclusive of Leaders at all levels- developing all stakeholders to be the person God has called them to be and empowering them to develop the children in our care to achieve their best.

### **Evolving**

A culture of constant evaluation, reflection and improvement to provide the very best for our schools.



*Bless our staff and  
volunteers. Thank You  
for calling them to work  
with our children.  
Please give them a spirit of  
grace  
and compassion.  
Bless them with strength  
and endurance to perform  
their many tasks,  
and may they know  
and feel the deep gratitude  
of those whom  
they teach and serve.*



# *Marian Term*



*(Autumn 1)*

# MARIAN TERM

## (AUTUMN 1)

# September 2025

### **Annual Update to KCSIE**

**With Oliver Welsby**

**Monday 1st September  
2025**

11.30am–12.30pm

Zoom

For: all staff

#SEN #CT #HT #TA

### **Update and Review of Key Changes**

During this one-hour virtual session we will cover the key changes and themes within KCSIE-24 to ensure that all staff are up to date with the latest statutory requirements for people working in Education settings.

There is also a quiz to assess understanding.

To Book: <https://www.bcpp.org.uk/events/25-kcsie-update>

**Sign up one member of staff only (everyone else sits with them).**

### **Director's note:**

*This is a session that all schools must do. We are trying to save you a job by sorting this for you. Plan your first day back around this, it is one job ticked off the 'to do' list. Sign up one person to be the lead, they will have the link to the session (show it on one device in the hall). This person will receive the quiz, and it is their job to share it and collate responses.*

*We are not recording this session this year, it had an additional cost and was not in demand, if you would like to discuss this with us, get in touch ASAP.*

**Decide which member of staff is going to be named to receive the link and distribute quiz info, they are the person to sign up for the session.**



|   |  |
|---|--|
|   |  |
|   |  |
| <p><b><u>Performance management can be improved without performance related pay</u></b></p> <p><b><u>With Andrew Pilmore</u></b></p> <p><b>Monday 8<sup>th</sup> September 2025</b></p> <p>9:30am–11:00am</p> <p>Zoom</p> <p>For: HT's and Senior Leaders</p> | <p><b>Performance Management can be improved without performance related pay.</b></p> <p>During this session we will:</p> <ul style="list-style-type: none"> <li>• Explore the current guidance for appraisal and capability and look at model policies.</li> <li>• Discuss the benefits of appraisal not linked to pay.</li> <li>• Explore a coaching/mentoring approach to performance management.</li> <li>• Look at a new system for performance management</li> </ul> <p>To Book: <a href="https://www.bcpp.org.uk/events/25-drb-performance">https://www.bcpp.org.uk/events/25-drb-performance</a></p> |
| <p><b><u>Director's note:</u></b></p> <p><i>You asked for guidance on delivering successful performance management without performance-related pay. Here it is. Book on and see if it helps you develop your thought processes...</i></p>                     |  |
| <b><u>Staff to be booked on:</u></b>  | <b><u>Cover arrangements in school:</u></b>  |
|   |  |
|   |  |



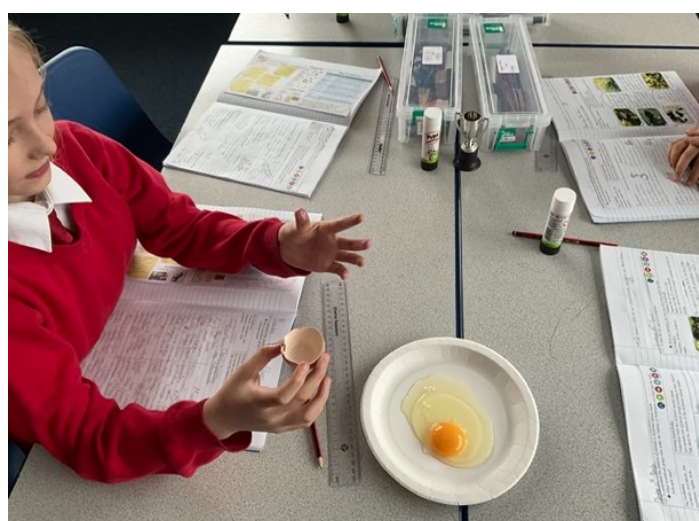


| <p><b><u>Safeguarding Compliance</u></b></p> <p><b><u>With Oliver Welsby</u></b></p> <p><b>Tuesday 9th September 2025</b></p> <p>9.30am–12.30pm</p> <p>Zoom</p> <p>For: Headteachers, CEO's, CSELs (Catholic Senior Executive Leaders), DSLs (Designated Safeguarding Lead) (Designated Safeguarding Lead), SENDCOs</p> <p>#SEN #HT #Safeguarding</p> | <p><b>Safeguarding Compliance</b></p> <p>During this session we will cover the latest statutory and non-statutory guidance documents and updates from a safeguarding perspective, highlighting key aspects and recommendations from each that schools will want to ensure are in place.</p> <p>To Book:<br/> <a href="https://www.bcpp.org.uk/events/25-safeguarding-compliance">https://www.bcpp.org.uk/events/25-safeguarding-compliance</a> </p> |
|---|---|
| <p><b><u>Director's note:</u></b></p> <p><i>Imagine how relieved you will feel when you come away knowing exactly what it is that is required. Ollie did this session last year and your feedback was – 'we want him to do this every year'. Ollie really knows his stuff-get booked on!</i></p>  |   |
| <b><u>Staff to be booked on:</u></b>  | <b><u>Cover arrangements in school:</u></b>   |
|   |   |
|   |   |





|   |  |
|---|--|
|   |  |
|   |  |
| <p><b><u>New to DSL-full training</u></b></p> <p><b><u>With Oliver Welsby</u></b></p> <p><b>Tuesday 16th and Tuesday 23rd September 2025</b></p> <p>9:00am-4:00pm</p> <p>Zoom</p> <p>For: New DSLs</p> <p><b>NOTE-ADDITIONAL CHARGE FOR THIS SESSION is a discounted price of £120.00 (normally £155) for both days! Best value around!</b></p>   | <p>The New to the Role of Designated Safeguarding Lead Course is an expert-led course for those new to the role of school DSL and or Deputy DSL. It is an extensive, authoritative and highly rated, <b>two</b> full-days training course that ensures DSLs &amp; DDSLs have the most comprehensive, effective and up-to-date understanding of and knowledge of how to lead the safeguarding provision in their setting.</p> <p>On this <b>two day</b> course, working with an expert trainer and highly experienced DSL, you will not only meet your statutory training requirements, but will also benefit from the latest research, presented in an engaging and motivating format, designed to ensure that you stay up to date on current developments, emerging risks, and best practice, whilst discussing case studies and sharing best practice with your co-delegates.</p> <p>To Book:<br/> <a href="https://www.bcpp.org.uk/events/25-new-dsl-1">https://www.bcpp.org.uk/events/25-new-dsl-1</a></p> |
| <p><b><u>Director's note:</u></b></p> <p><i>In my experience, the price of DSL training from LA' was extortionate. That's just not OK. WE are subsidising these sessions so that you can access <b>two full days DSL training for £155</b>. If this proves to be successful, we will do this every two years. Let us know what you want. You won't find better value for this anywhere.</i></p> |  |
| <b><u>Staff to be booked on:</u></b>  | <b><u>Cover arrangements in school:</u></b>  |
|   |  |
|   |  |



| <p><b><u>Welcome the stranger?</u></b></p> <p><b><u>With Dr James Trewby of the Columban Missionaries and Steph Neville of Stories of Hope and Home</u></b></p> <p><b>Session 1 (of 5)</b></p> <p><b>All sessions must be attended.</b></p> <p><b>Monday 22nd September 2025</b></p> <p>1.00pm–3.00pm</p> <p><b>Zoom</b></p> <p>For headteachers</p> <p>#HT</p>  | <p><b><i>Learning together:</i></b></p> <p>One of Pope Francis’ major themes has been calling everyone, and particularly Catholic Communities, to challenge ‘indifference’ and act in solidarity with people forced to leave their homes. The Bishops’ Conference of England and Wales have seconded this with their publication, ‘Love of the Stranger’. As Catholic educators and leaders we have been called to action, but do not always have the information, experience or understanding required – or indeed the time and space – to explore the issues related to ‘Welcoming the Stranger’.</p> <p>This programme will include CST, prayer, reflection and a residential ‘Festival of Encounter’ together with people seeking safety in Britain.</p> <p>This is session 1 of 5 and <b>we need you to commit to all 5 sessions.</b></p> <p><b>Future dates for your diary:</b><br/> <b>Session 2 - Zoom</b> – Monday 29<sup>th</sup> September 2025 - 1.00pm–3.00pm</p> <p><b>Session 3</b> – Wednesday 8<sup>th</sup> October 2025 10.00am – 2.00pm<br/> <b>Face to Face:</b> SS John and Monica Catholic Primary School, Chantry Rd, Moseley, Birmingham B13 8DW</p> <p><b>Session 4 - Residential</b> - Tuesday 14<sup>th</sup> October 2025 - Thursday 16<sup>th</sup> October 2025 - Loreto Centre, Llandudno</p> <p><b>Session 5 – Zoom</b> - Monday 20<sup>th</sup> October 2025 - 1.00pm–3.00pm</p> <p>To book:<br/> <a href="https://www.bcpp.org.uk/events/25-welcome-stranger-1">https://www.bcpp.org.uk/events/25-welcome-stranger-1</a></p> |
|--|---|
| <p><b><u>Director’s note:</u></b></p> <p><i>This opportunity took place in 2021 and 2024, the head teachers who attended found it <b>life changing</b>.</i></p> <p><b><i>Only sign up if you are fully committed to being part of a new experience.</i></b></p> <p><i>Only 12 places available.</i></p> <p><b><u>Feedback from last year’s attendees:</u></b></p> <p><i>The ‘welcome the stranger’ programme has been truly transformational and life changing. It has taken me completely out of my comfort zone and challenged my thinking. Yes, I’m a Catholic Head</i></p> |   |

*but this has given me a real sense of responsibility to make change. I am making a long-term plan for my school and staff.*

*Definitely worth doing again and trying to persuade as many people to come on it as possible!*

*It will help to broaden your outlook and think about what matters.*

*The whole experience has strengthened my faith and brought a different dimension to my prayer life and reflections. It's an opportunity to live the gospels and to 'use and apply' their messages.*

**Staff to be booked on:**

**Cover arrangements in school:**



|  |  |
|--|--|
|  |  |
|  |  |
| <p><b><u>DSL refresher/update training</u></b></p> <p><b><u>With Oliver Welsby</u></b></p> <p><b>23rd September 2025</b></p> <p>9:00am-4:00pm</p> <p>Zoom</p> <p>For: DSLs, Deputy DSLs</p> <p><b>NOTE-ADDITIONAL CHARGE FOR THIS SESSION is a discounted price of £120.00 (normally £155)! Best value around</b></p>  | <p>The Designated Safeguarding Lead Refresher / Update Course is an expert-led update and refresher course for school DSLs and their Deputies.</p> <p>It is an extensive, authoritative and highly rated, full-day training course that ensures DSL/DDSLS have the most comprehensive, effective and up-to-date knowledge and strategies in place to lead the safeguarding provision in their setting.</p> <p>Full Day Course: 9:00am to 4:00pm (note this course is the same as the New to DSL Day 2).</p> <p>To Book:<br/> <a href="https://www.bcpp.org.uk/events/25-new-dsl-2">https://www.bcpp.org.uk/events/25-new-dsl-2</a></p> |
| <p><b><u>Director's note:</u></b></p> <p><i>We have had several requests for a more in-depth refresher for DSLs with an opportunity for them to ask questions and get advice. Here it is. <b>There is an additional charge of £155 for this session.</b> If you want it, we will offer this every two years, just let us know. There will still be the option to access the online course, if that suits your needs/ learning style better. You won't find better value for this anywhere.</i></p> |  |
| <b><u>Staff to be booked on:</u></b>   | <b><u>Cover arrangements in school:</u></b>  |
|  |  |
|  |  |



|  |  |
|--|--|
|  |  |
|  |  |
| <b><u>Introduction to Behaviour 360</u></b><br><br><b><u>With Emma Shackleton</u></b><br><br><b>Thursday 25th September 2025</b><br><br>9:30am-10:15am<br>Zoom<br><br>For: Headteachers, CSELs | Join Emma for a quick tour of the fantastic, online platform of SEMH and behaviour resources, tools and strategies: Beacon Behaviour 360.<br><br>Inside the platform, you'll find everything you need for immediately accessible, high-quality training for teachers, Tas, lunchtime supervisors and parents.<br><br>Get all of your adults pulling in the same direction for the biggest impact for your pupils.<br><br>To Book:<br><a href="https://www.bcpp.org.uk/events/25-behaviour-360">https://www.bcpp.org.uk/events/25-behaviour-360</a> |
| <b><u>Director's note:</u></b><br><i>If you like what Emma and her team do, this is your chance to find out more about how they can support your school.</i>                                   |  |
| <b><u>Staff to be booked on:</u></b><br><br>Headteachers, Senior Leaders   | <b><u>Cover arrangements in school:</u></b>  |
|  |  |
|  |  |





|  |  |
|--|--|
|  |  |
|  |  |
| <p><b>Attendance Inclusive Attendance – Empowering Schools to Change Attendance Cultures!</b></p> <p><b>With Wayne Harris CEO &amp; Founder Inclusive Attendance.</b></p> <p>Tuesday 7<sup>th</sup> October 2025</p> <p>9:30am-10:30am</p> <p>Zoom</p> <p>For: Senior Attendance Champions, HTs, DHTs, Attendance leads in schools and MATs</p>  | <p><b>Explore the DfE 2024 statutory paper and understand how the Inclusive Attendance programme can prepare your school for these upcoming change.</b></p> <p>Join us for an exclusive webinar led by Wayne Harris, a distinguished attendance leader with a remarkable record in enhancing attendance rates within both Primary and Secondary school settings. With over a decade of experience, Wayne's expertise has propelled him to the forefront of attendance national improvement strategies. The Inclusive Attendance model is recognised both nationally and internationally.</p> <p><b>Webinar Session Highlights:</b></p> <p><b>1. The Post-Pandemic World</b> Explore the challenges confronted by schools, children, and families in the aftermath of the pandemic. Understand how the Inclusive Attendance approach aligns and surpasses the requirements within the 2024 DfE 'Working Together to Improve School Attendance' paper.</p> <p><b>2. Create a New Attendance Culture</b> Learn to cultivate a culture where collective responsibility for school attendance is embraced. Explore two Key Strands from the Inclusive Attendance Model. Gain exclusive insights into the Inclusive Governance accredited attendance programme.</p> <p><b>3. Redefine Your Approach</b> Explore the process of moving towards a culture where everyone actively engages in school attendance responsibility. Briefly focus on the Inclusive Attendance Implementation programme, built on the foundation of EEF Professional Development guidance.</p> <p><b>Just one of the benefits of attending:</b></p> <ul style="list-style-type: none"> <li>• Receive a FREE £30 membership for the Inclusive Attendance website.</li> </ul> <p>To Book:<br/> <a href="https://www.bcpp.org.uk/events/25-inclusive-attendance">https://www.bcpp.org.uk/events/25-inclusive-attendance</a></p> |
| <p><b><u>Director's note:</u></b></p> <p><i>I was really impressed with the training provided by Wayne and his team and excited by the accredited opportunities available for staff and governors. Wayne makes it really clear how you can support your team in understanding that developing great attendance is the responsibility of all. I fully recommend attending this one-hour session to hear what he has to say.</i></p> |  |
| <b><u>Staff to be booked on:</u></b>   | <b><u>Cover arrangements in school:</u></b>  |
|  |  |
|  |  |



# Marian Term

## CPDF at a glance

If you click on the link in the description, it will take you to the information about the course.  
If you want to book, click the 'To book' link, which will take you directly to our booking website.

## September 2025

| Course title   | Date  | To book   |
|--|---|---|
| Annual Update to KCSIE<br><br>With Oliver Welsby   | Monday 1st September 2025<br><br>11:30am-12:30pm  | <a href="https://www.bcpp.org.uk/events/25-kcsie-update">https://www.bcpp.org.uk/events/25-kcsie-update</a>                       |
| Performance Management without Performance related pay<br><br>With Andrew Pilmore  | Monday 8 <sup>th</sup> September 2025<br><br>9:30am-11:00am   | <a href="https://www.bcpp.org.uk/events/25-drb-performance">https://www.bcpp.org.uk/events/25-drb-performance</a>                 |
| Safeguarding Compliance<br><br>With Oliver Welsby  | Tuesday 9th September 2025<br><br>9:30am–12:30pm  | <a href="https://www.bcpp.org.uk/events/25-safeguarding-compliance">https://www.bcpp.org.uk/events/25-safeguarding-compliance</a> |
| New to DSL-full training<br><br>With Oliver Welsby   | Tuesday 16th and Tuesday 23rd September 2025<br><br>9:00am-4:00pm   | <a href="https://www.bcpp.org.uk/events/25-new-dsl-1">https://www.bcpp.org.uk/events/25-new-dsl-1</a>                             |
| Science Leaders' Support and Development Group day 1 of 6<br><br>With Kate Redhead   | Thursday 18 <sup>th</sup> September 2025<br><br>2:00pm-3:30pm   | <a href="https://www.bcpp.org.uk/events/25-science-support-group-1">https://www.bcpp.org.uk/events/25-science-support-group-1</a> |
| Welcome the Stranger?<br><br>With Dr James Trewby of the Columban Missionaries and Steph Neville of Stories of Hope and Home<br><br>Zoom and residential | Monday 22nd September 2025<br><br>1.00pm-3.00pm<br>Session 1 (of 5)<br><br>All sessions must be attended.<br><br>Session 2 - Zoom – Monday 29 <sup>th</sup> September 2025 - 1.00pm–3.00pm<br>Session 3 – Wednesday 8th October 2025 10.00am–2:00pm<br>Face to Face: Venue to be confirmed. (It will be Birmingham) | <a href="https://www.bcpp.org.uk/events/25-welcome-stranger-1">https://www.bcpp.org.uk/events/25-welcome-stranger-1</a>           |

|  |   |   |
|--|---|---|
|  | 10:00am-2:00pm<br>Session 4 - Residential<br>Tuesday 14 <sup>th</sup> October<br>2025- Thursday 16 <sup>th</sup><br>October 2025<br>Session 5 - Zoom<br>Monday 20 <sup>th</sup> October 2025<br>1:00pm-3:00pm |   |
| DSL refresher - New to<br>DSL day 2<br><br>With Oliver Welsby                  | Tuesday 23 <sup>rd</sup> September<br>2025<br><br>9:00am-4:00pm   | <a href="https://www.bcpp.org.uk/events/25-new-dsl-2">https://www.bcpp.org.uk/events/25-new-dsl-2</a>                   |
| Me, myself and I – 1 of 3<br><br>With Ruth Swailes                             | Wednesday 24 <sup>th</sup> September<br>2025<br>4:00pm-5:00pm<br><br>Session 2 – Tuesday 7 <sup>th</sup><br>October 2025<br>Session 3 – Tuesday 21 <sup>st</sup><br>October 2025                              | <a href="https://www.bcpp.org.uk/events/25-eyfs-me-myself-1">https://www.bcpp.org.uk/events/25-eyfs-me-myself-1</a>     |
| Introduction to Behaviour<br>360<br><br>With Emma Shackleton                   | Thursday 25 <sup>th</sup> September<br>2025.<br><br>9:30am-10.15am  | <a href="https://www.bcpp.org.uk/events/25-behaviour-360">https://www.bcpp.org.uk/events/25-behaviour-360</a>           |
| Welcome the Stranger? –<br>Day 2 of 5<br><br>James Trewby and Steph<br>Neville | Session 2 - Zoom –<br>Monday 29 <sup>th</sup> September<br>2025 - 1.00pm-3.00pm   | <a href="https://www.bcpp.org.uk/events/25-welcome-stranger-2">https://www.bcpp.org.uk/events/25-welcome-stranger-2</a> |
| What you need to know<br>about Reception<br><br>With Ruth Swailes              | Tuesday 30 <sup>th</sup> September<br>2025<br><br>9:30am-12:30pm  | <a href="https://www.bcpp.org.uk/events/25-reception-ntk">https://www.bcpp.org.uk/events/25-reception-ntk</a>           |

## October 2025

| Course title  | Date  | To book   |
|---|---|---|
| HT Support Group day 1<br><br>With Clare Cheetham                         | Thursday 2 <sup>nd</sup> October 2025<br><br>9:30am-12:30pm | <a href="https://www.bcpp.org.uk/events/25-head-support-group-1">https://www.bcpp.org.uk/events/25-head-support-group-1</a>           |
| DRB Leadership Briefing<br><br>With Andrew Pilmore                        | Monday 6 <sup>th</sup> October 2025<br><br>10:00am-12:30pm  | <a href="https://www.bcpp.org.uk/events/25-drb-briefing-1">https://www.bcpp.org.uk/events/25-drb-briefing-1</a>                       |
| Computing Leaders' Support Group<br>With Sharon Cufflin and<br>Vikki Bott | Monday 6 <sup>th</sup> October 2025<br><br>1:15pm-3:15pm    | <a href="https://www.bcpp.org.uk/events/25-computing-support-group-1">https://www.bcpp.org.uk/events/25-computing-support-group-1</a> |
| Attendance  | Tuesday 7 <sup>th</sup> October 2025                        | <a href="https://www.bcpp.org.uk/events/25-inclusive-attendance">https://www.bcpp.org.uk/events/25-inclusive-attendance</a>           |

|  |   |   |
|--|---|---|
| with Wayne Harris                              | 9:30am-10:30am  |   |
| Me, myself and I – 2 of 3                      | Tuesday 7 <sup>th</sup> October 2025  | <a href="https://www.bcpp.org.uk/events/25-eyfs-me-myself-2">https://www.bcpp.org.uk/events/25-eyfs-me-myself-2</a>               |
| With Ruth Swailes                              | 4:00pm-5:00pm   |   |
| Welcome the Stranger?<br>day 3 of 5            | Session 3 – Wednesday<br>8th October 2025<br>10.00am–2:00pm<br>Face to Face venue to be confirmed   | <a href="https://www.bcpp.org.uk/events/25-welcome-stranger-3">https://www.bcpp.org.uk/events/25-welcome-stranger-3</a>           |
| With James Trewby and Steph Neville            |   |   |
| Maths Leaders' Support and Development Group   | Thursday 9 <sup>th</sup> October 2025   | <a href="https://www.bcpp.org.uk/events/25-maths-support-group-1">https://www.bcpp.org.uk/events/25-maths-support-group-1</a>     |
| With Nathan Crook                              | 9:30am-12:00pm<br><br>Session 2<br>Wednesday 11th February 2026<br>1:30pm-4:00pm<br><br>Session 3<br>Wednesday 29th April 2026<br>1:30pm-4:00pm |   |
| KCSIE for Governors                            | Thursday 9 <sup>th</sup> October 2025   | <a href="https://www.bcpp.org.uk/events/25-gov-kcsie">https://www.bcpp.org.uk/events/25-gov-kcsie</a>                             |
| With Oliver Welsby                             | 6:00pm-7:30pm   |   |
| English Leaders' Support and Development Group | Monday 13 <sup>th</sup> October 2025  | <a href="https://www.bcpp.org.uk/events/25-english-support-group-1">https://www.bcpp.org.uk/events/25-english-support-group-1</a> |
| With Susie Spolander                           | 2:30pm-3:30pm   |   |
| Welcome the Stranger?<br>Residential           | Session 4 - Residential<br>Tuesday 14 <sup>th</sup> October 2025- Thursday 16 <sup>th</sup> October 2025  | <a href="https://www.bcpp.org.uk/events/25-welcome-stranger-4">https://www.bcpp.org.uk/events/25-welcome-stranger-4</a>           |
| With James Trewby and Steph Neville            |   |   |
| PE Leaders' Support and Development Group      | Tuesday 14 <sup>th</sup> October 2025   | <a href="https://www.bcpp.org.uk/events/25-pe-support-group-1">https://www.bcpp.org.uk/events/25-pe-support-group-1</a>           |
| With Dan Wilson from Beyond the Physical       | 1:30pm-3:00pm   |   |
| Welcome the Stranger?                          | Monday 20 <sup>th</sup> October 2025  | <a href="https://www.bcpp.org.uk/events/25-welcome-stranger-5">https://www.bcpp.org.uk/events/25-welcome-stranger-5</a>           |
| With James Trewby and Steph Neville            | 1:00pm–3:00pm   |   |
| Me, myself and I – 3 of 3                      | Tuesday 21 <sup>st</sup> October 2025   | <a href="https://www.bcpp.org.uk/events/25-eyfs-me-myself-3">https://www.bcpp.org.uk/events/25-eyfs-me-myself-3</a>               |
| With Ruth Swailes                              | 4:00pm-5:00pm   |   |

# Remembrance term



(Autumn 2)

# REMEMBRANCE TERM

## (AUTUMN 2)

### November 2025

#### **Lunchtime support training – Day 1 of 3**

**With Helen Guest**

**Thursday 6th November 2025**

10:30am-11:30am

Zoom

For: All staff who support pupils at lunchtimes.

#supportstaff

Pupils with complex needs are increasing in our mainstream schools.

Wherever you are teaching, building positive relationships with children is crucial when it comes to getting students on board.

Find out why children thrive when we use a positive approach and explore strategies that we can start using straight away to build strong relationships with all children.

#### **Future dates:**

Tuesday 3rd February 2026

Tuesday 28th April 2026

To Book: <https://www.bcpp.org.uk/events/25-ls-positive-relationships>

#### **Director's note:**

*We know that this can be a challenging time in school, help the amazing staff that look after the pupils at lunchtime by supporting them additional training. Sessions are an hour and timetabled just before lunchtime so learning can be trialled straight away.*

#### **Staff to be booked on:**

#### **Cover arrangements in school:**





|  |  |
|--|--|
|  |  |
|  |  |
| <p><b><u>Managing Challenging Conversations with Parents – Session 1 of 3</u></b></p> <p><b><u>With Helen Guest</u></b></p> <p><b>Thursday 6th November 2025</b></p> <p>1:30pm-3:00pm<br/>Zoom</p> <p>For: Experienced class teachers, ECTs, HLTAs, office staff are also encouraged to join the training.</p> | <p><b>Parents are under stress too!</b> And that can mean that sometimes their behaviours towards us are challenging. It's not ok for parents to get angry and cause conflict. But when that happens, we all need to know how to be prepared. We all know that outcomes for children are better when home and school can work together. Here we explore why challenging situations can arise when dealing with parents and carers, along with practical strategies to help these tricky conversations run more smoothly.</p> <p><b>Future dates:</b><br/>Tuesday 3rd February 2026<br/>Tuesday 28th April 2026</p> <p>To Book: <a href="https://www.bcpp.org.uk/events/25-challenging-conversations">https://www.bcpp.org.uk/events/25-challenging-conversations</a></p> |
| <p><b><u>Director's note:</u></b><br/><i>School staff are having to deal with challenging conversations daily: help them to manage these situations by up-skilling them.</i></p>   |  |
| <b><u>Staff to be booked on:</u></b>   | <b><u>Cover arrangements in school:</u></b>  |
|  |  |
|  |  |





|  |   |
|--|---|
|  |   |
|  |   |
| <p><b><u>Mental health support</u></b></p> <p><b><u>Supporting Pupils Develop A Positive Mindset</u></b></p> <p><b><u>With Rachel Chilver</u></b></p> <p><b>Monday 10<sup>th</sup> November 2025</b></p> <p>1:30pm-3:00pm</p> <p>Zoom</p> <p>For: Teaching Assistants</p>  | <p>In this session, staff will develop strategies to help them support pupils struggling with low self-esteem to achieve a more positive mindset. Attendees will understand how to reframe negative thinking and learn a range of strategies to support pupils build their emotional resilience. Key focus areas include self-esteem, affirmations, gratitude, reframing negative thought patterns and celebrating personal powers.</p> <p>To Book:<br/> <a href="https://www.bcpp.org.uk/events/25-positive-mindset">https://www.bcpp.org.uk/events/25-positive-mindset</a> </p> |
| <p><b><u>Director's note:</u></b><br/> <i>TAs have shared that they often don't feel prepared to deal with some of the issues they are being faced with when supporting pupils with their emotional resilience. This session is aimed at supporting them to do this. Perhaps a session for all TAs and SENDCO to attend together?</i> </p> |   |
| <b><u>Staff to be booked on:</u></b>   | <b><u>Cover arrangements in school:</u></b>   |
|  |   |
|  |   |



|  |  |
|--|--|
|  |  |
|  |  |
| <b><u>Headteachers Get together</u></b><br><b><u>Face to face at Edgbaston Priory</u></b><br><b><u>Tennis Club (Lunch included)</u></b><br><b>Friday 28<sup>th</sup> November 2025</b><br>9.00am – 1.00pm<br>For: Headteachers/Principals<br>#HT | An opportunity to network with other head teachers face to face and ensure that relationships are established and strengthened between Catholic school leaders.<br>Including an Ofsted update.<br><b>Future dates for your diary:</b><br>Friday 28 <sup>th</sup> March 2026 - Headteacher Get together.<br>Thursday 4 <sup>th</sup> June and Friday 5 <sup>th</sup> June 2026 - HT Residential<br>To book: <a href="https://www.bcpp.org.uk/events/25-head-face2face-1">https://www.bcpp.org.uk/events/25-head-face2face-1</a> |
| <b><u>Director's note:</u></b><br><i>It is so important that you give yourself time to be with other headteachers. This is an investment in YOUR well-being. Please book on. Just like Loreal-you're worth it!</i>                               |  |
| <b><u>Staff to be booked on:</u></b>   | <b><u>Cover arrangements in school:</u></b>  |
|  |  |
|  |  |
|  |  |



# Remembrance Term

## CPDF at a glance

If you click on the link in the description, it will take you to the information about the course.  
If you want to book, click the 'To book' link, which will take you directly to our booking website.

## November 2025

| Course title  | Date                                    | To book   |
|---|---|---|
| EYFS Leader Support Group                                 | Monday 3 <sup>rd</sup> November 2025    | <a href="https://www.bcpp.org.uk/events/25-eyfs-support-group-1">https://www.bcpp.org.uk/events/25-eyfs-support-group-1</a>           |
| With Ruth Swailes   | 1:15pm-2:45pm                           |   |
| Building Positive Relationships                           | Thursday 6 <sup>th</sup> November 2025  | <a href="https://www.bcpp.org.uk/events/25-ls-positive-relationships">https://www.bcpp.org.uk/events/25-ls-positive-relationships</a> |
| With Helen Guest  | 10:30am-11:30am                         |   |
| Managing Challenging Conversations with Parents           | Thursday 6 <sup>th</sup> November 2025  | <a href="https://www.bcpp.org.uk/events/25-challenging-conversations">https://www.bcpp.org.uk/events/25-challenging-conversations</a> |
| With Helen Guest  | 1:30pm-3:00pm                           |   |
| Developing a positive mindset for pupils                  | Monday 10 <sup>th</sup> November 2025   | <a href="https://www.bcpp.org.uk/events/25-positive-mindset">https://www.bcpp.org.uk/events/25-positive-mindset</a>                   |
| With Rachel Chilver                                       | 1:30pm-3:00pm                           |   |
| Science Leaders' Support and Development Group day 2 of 6 | Tuesday 11 <sup>th</sup> November 2025  | <a href="https://www.bcpp.org.uk/events/25-science-support-group-2">https://www.bcpp.org.uk/events/25-science-support-group-2</a>     |
| With Kate Redhead   | 2:00pm-3:30pm                           |   |
| EYFS<br>Let's get reading and writing sorted!             | Thursday 13 <sup>th</sup> November 2025 | <a href="https://www.bcpp.org.uk/events/25-eyfs-reading-writing">https://www.bcpp.org.uk/events/25-eyfs-reading-writing</a>           |
| With Dr Bogusia Matusiak-Varley                           | 9:00am-12:00pm                          |   |
| Reminders for good governance                             | Thursday 13 <sup>th</sup> November 2025 | <a href="https://www.bcpp.org.uk/events/25-gov-governance">https://www.bcpp.org.uk/events/25-gov-governance</a>                       |
| With Dr Bogusia Matusiak-Varley                           | 6:00pm-7:00pm                           |   |
| Early Writing, Write from the start                       | Monday 17 <sup>th</sup> November 2025   | <a href="https://www.bcpp.org.uk/events/25-early-writing-1">https://www.bcpp.org.uk/events/25-early-writing-1</a>                     |

|  |   |   |
|--|---|---|
| With Ruth Swailes                      | 1:00pm-2:30pm   |   |
| SENDCO Support and Development Group   | Tuesday 25 <sup>th</sup> November 2025                                      | <a href="https://www.bcpp.org.uk/events/25-senco-support-group-1">https://www.bcpp.org.uk/events/25-senco-support-group-1</a> |
| Session 1 of 3                         | Future dates:   |   |
| With Matt McArthur                     | Thursday 19 <sup>th</sup> March 2026<br>Thursday 18 <sup>th</sup> June 2026 |   |
|  | 1:30pm-5:30pm   |   |
| HT Support and Development Group Day 2 | Thursday 27 <sup>th</sup> November 2025                                     | <a href="https://www.bcpp.org.uk/events/25-head-support-group-2">https://www.bcpp.org.uk/events/25-head-support-group-2</a>   |
| With Clare Cheetham                    | 9:30am-12:30pm  |   |
| Headteacher Get Together               | Friday 28 <sup>th</sup> November 2025                                       | <a href="https://www.bcpp.org.uk/events/25-head-face2face-1">https://www.bcpp.org.uk/events/25-head-face2face-1</a>           |
| At Priory Tennis Club                  | 9:00am-1:00pm   |   |

## December 2025

| Course title                                   | Date                                   | To book   |
|--|--|---|
| Early Writing, write from the start            | Tuesday 2 <sup>nd</sup> December 2025  | <a href="https://www.bcpp.org.uk/events/25-early-writing-2">https://www.bcpp.org.uk/events/25-early-writing-2</a>                 |
| With Ruth Swailes                              | 1:00pm-2:30pm                          |   |
| English Leaders' Support and Development Group | Thursday 4 <sup>th</sup> December 2025 | <a href="https://www.bcpp.org.uk/events/25-english-support-group-2">https://www.bcpp.org.uk/events/25-english-support-group-2</a> |
| With Susie Spolander                           | 2:00pm-3:30pm                          |   |





# Candlemas Term



(Spring 1)

# CANDLEMAS TERM

## (SPRING 1)

### January 2026

#### **STAFF MEETING SESSION**

#### **Whole Staff Online safety annual update**

**With Oliver Welsby**

**Tuesday 13th January 2026**

3:45pm-4:45pm

Zoom

#### **The Changing Online Landscape: understanding the risks and opportunities faced by children and young people today.**

During this 60-minute session we will focus on understanding recent changes and developments in the online world. We review the changing risks for children and young people who are operating online in ever increasing amounts of time each day, including from a mental health and wellbeing perspective.

We will not only examine the evolving risk and trends, but also look at how we can all respond to these developments positively from an educational perspective, ensuring our children are both protected and supported whilst engaging in the exciting and ever developing online world.

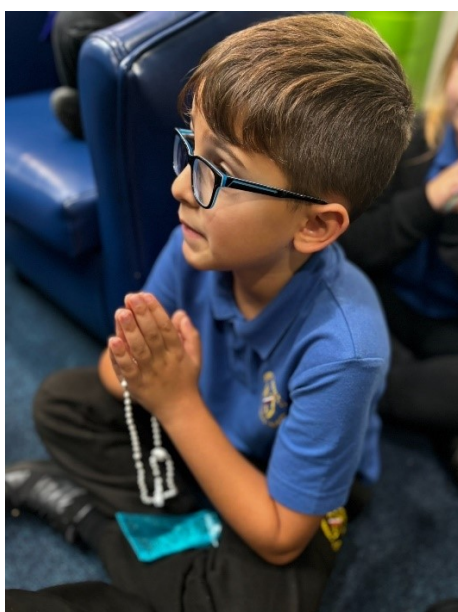
To book: <https://www.bcpp.org.uk/events/25-staff-online-safety>

#### **Director's note:**

It's a requirement for all staff to be trained in this. We are ensuring this is done to a high standard without additional work being placed on school staff.

#### **Staff to be booked on:**

#### **Cover arrangements in school:**





# CANDLEMAS TERM

## (SPRING 1)

### February 2026

#### **Understanding anger and de-escalation – Session 2 of 3**

**With Helen Guest**

**Tuesday 3rd February 2026**

10:30-11:30am

Zoom

For: All staff who support pupils at lunchtimes.

Join Helen for a refresher training of one of our most popular courses - understand what's happening in brains and bodies when children get angry or overwhelmed at school.

Dealing with big feelings and conflicts between pupils at lunchtime is difficult and can feel overwhelming.

Walk away with strategies and techniques that you can start to implement straight away and learn which techniques to avoid because they will actually make the situation worse!

**Future dates:**

Tuesday 28th April 2026

To Book: <https://www.bcpp.org.uk/events/25-understanding-anger>

**Director's note:**

*Book your staff who lead lunchtimes onto these sessions.*

**Staff to be booked on:**

**Cover arrangements in school:**

#### **Supporting girls with Autism – Session 2 of 3**

**With Helen Guest**

**Tuesday 3rd February 2026**

1:30pm-3:00pm

Zoom

For: Experienced class teachers, ECTs, HLTAs

Girls and boys with autism can present very differently in school.

Dive into this training where we explore practical ways that we can help girls to feel supported and listened to.

**Future dates:**

Tuesday 28th April 2026

To book: <https://www.bcpp.org.uk/events/25-girls-autism>

**Director's note:**

*This was an area that was identified last year as something that staff wanted support with. Get staff booked on.*

**Staff to be booked on:**

**Cover arrangements in school:**

# Candlemas Term CPDF at a glance

If you click on the link in the description, it will take you to the information about the course.  
If you want to book, click the 'To book' link, which will take you directly to our booking website.

## January 2026

| Course title   | Date   | To book   |
|--|--|---|
| STAFF MEETING SESSION<br>Whole Staff Online safety annual update<br><br>With Oliver Welsby | Tuesday 13th January 2026<br><br>3:45pm-4:45pm               | <a href="https://www.bcpp.org.uk/events/25-staff-online-safety">https://www.bcpp.org.uk/events/25-staff-online-safety</a>         |
| PE Leaders' Support and Development Group<br><br>With Dan Wilson From Beyond the Physical  | Wednesday 14 <sup>th</sup> January 2026<br><br>1:30pm-3:30pm | <a href="https://www.bcpp.org.uk/events/25-pe-support-group-2">https://www.bcpp.org.uk/events/25-pe-support-group-2</a>           |
| EYFS Leaders' Support Group<br><br>With Ruth Swailes                                       | Thursday 15 <sup>th</sup> January 2026<br><br>1:15pm-2:45pm  | <a href="https://www.bcpp.org.uk/events/25-eyfs-support-group-2">https://www.bcpp.org.uk/events/25-eyfs-support-group-2</a>       |
| An effective academic diet for the lowest 20%<br><br>With Dr Bogusia Matusiak-Varley       | Tuesday 20 <sup>th</sup> January 2026<br><br>9:00am-12:00pm  | <a href="https://www.bcpp.org.uk/events/25-academic-diet">https://www.bcpp.org.uk/events/25-academic-diet</a>                     |
| Head Masters of Stress<br><br>With Helen Dos Santos  | Thursday 22 <sup>nd</sup> January 2026<br><br>9:30am-10:30am | <a href="https://www.bcpp.org.uk/events/25-head-stress">https://www.bcpp.org.uk/events/25-head-stress</a>                         |
| Science Leaders' Support and Development Group day 3 of 6<br><br>With Kate Redhead         | Thursday 22 <sup>nd</sup> January 2026<br><br>2.00pm-3:30pm  | <a href="https://www.bcpp.org.uk/events/25-science-support-group-3">https://www.bcpp.org.uk/events/25-science-support-group-3</a> |
| HT Support and Development Group day 3 of 5<br><br>With Clare Cheetham                     | Tuesday 27 <sup>th</sup> January 2026<br><br>9:30am-12:30pm  | <a href="https://www.bcpp.org.uk/events/25-head-support-group-3">https://www.bcpp.org.uk/events/25-head-support-group-3</a>       |
| English Leaders' Support and Development Group<br><br>With Susie Spolander                 | Thursday 29 <sup>th</sup> January 2026<br><br>2:00pm-3:30pm  | <a href="https://www.bcpp.org.uk/events/25-english-support-group-3">https://www.bcpp.org.uk/events/25-english-support-group-3</a> |

# February 2026

| Course title  | Date   | To book   |
|---|--|---|
| Understanding anger and de-escalation<br><br>With Helen Guest                                   | Tuesday 3 <sup>rd</sup> February 2026<br><br>10:30am–11:30am   | <a href="https://www.bcpp.org.uk/events/25-understanding-anger">https://www.bcpp.org.uk/events/25-understanding-anger</a>             |
| Supporting girls with Autism<br><br>With Helen Guest  | Tuesday 3 <sup>rd</sup> February 2026<br><br>1:30pm – 3:30pm   | <a href="https://www.bcpp.org.uk/events/25-girls-autism">https://www.bcpp.org.uk/events/25-girls-autism</a>                           |
| DRB Leadership Briefing<br><br>With Andrew Pilmore  | Thursday 5 <sup>th</sup> February 2026<br><br>10:00am-12:30pm  | <a href="https://www.bcpp.org.uk/events/25-drb-briefing-2">https://www.bcpp.org.uk/events/25-drb-briefing-2</a>                       |
| Maths for TAs - How TAs can support pupils in maths<br><br>With Helen Owens                     | Thursday 5 <sup>th</sup> February 2026<br><br>1:15pm-3:00pm  | <a href="https://www.bcpp.org.uk/events/25-ta-maths">https://www.bcpp.org.uk/events/25-ta-maths</a>                                   |
| SEND in EYFS, Effective Provision & Practice<br><br>With Rachel Wilks                           | Monday 9 <sup>th</sup> February 2026<br><br>1:00pm-3:00pm  | <a href="https://www.bcpp.org.uk/events/25-eyfs-send">https://www.bcpp.org.uk/events/25-eyfs-send</a>                                 |
| Computing Leaders' Support and Development Group<br><br>With Sharon Cufflin and Vikki Woodfield | Tuesday 10 <sup>th</sup> February 2026<br><br>1:15pm-3:15pm  | <a href="https://www.bcpp.org.uk/events/25-computing-support-group-2">https://www.bcpp.org.uk/events/25-computing-support-group-2</a> |
| Maths Leaders' Support and Development Group<br><br>With Nathan Crook                           | Wednesday 11 <sup>th</sup> February 2026<br><br>1:30pm-4:00pm<br><br>Session 3<br>Wednesday 29 <sup>th</sup> April 2026<br>1:30pm-4:00pm | <a href="https://www.bcpp.org.uk/events/25-maths-support-group-2">https://www.bcpp.org.uk/events/25-maths-support-group-2</a>         |



# Lenten Term



(Spring 2)

# LENTEN TERM

## (SPRING 2)

### March 2026

#### **Headteachers Get together**

#### **Face to face at Edgbaston Priory Tennis Club (Lunch included)**

**Friday 20<sup>th</sup> March 2026**

9.00am – 1.00pm

For: Headteachers/Principals

#HT

An opportunity to network with other head teachers face to face and ensure that relationships are established and strengthened between Catholic school leaders.

Including an Ofsted update.

**Future dates for your diary:**

**Thursday 4<sup>th</sup> June and Friday 5<sup>th</sup> June 2026 -  
Headteacher Residential**

To book:

<https://www.bcpp.org.uk/events/25-head-face2face-2>

#### **Director's note:**

*It is so important that you give yourself time to be with other headteachers. This is an investment in YOUR well-being. Please book on. Just like L'Oréal-you're worth it!*

#### **Staff to be booked on:**

#### **Cover arrangements in school:**



*"Your heart is slightly larger than  
the average human heart, but  
that's because you're a teacher."*

# Lenten Term CPDF at a glance

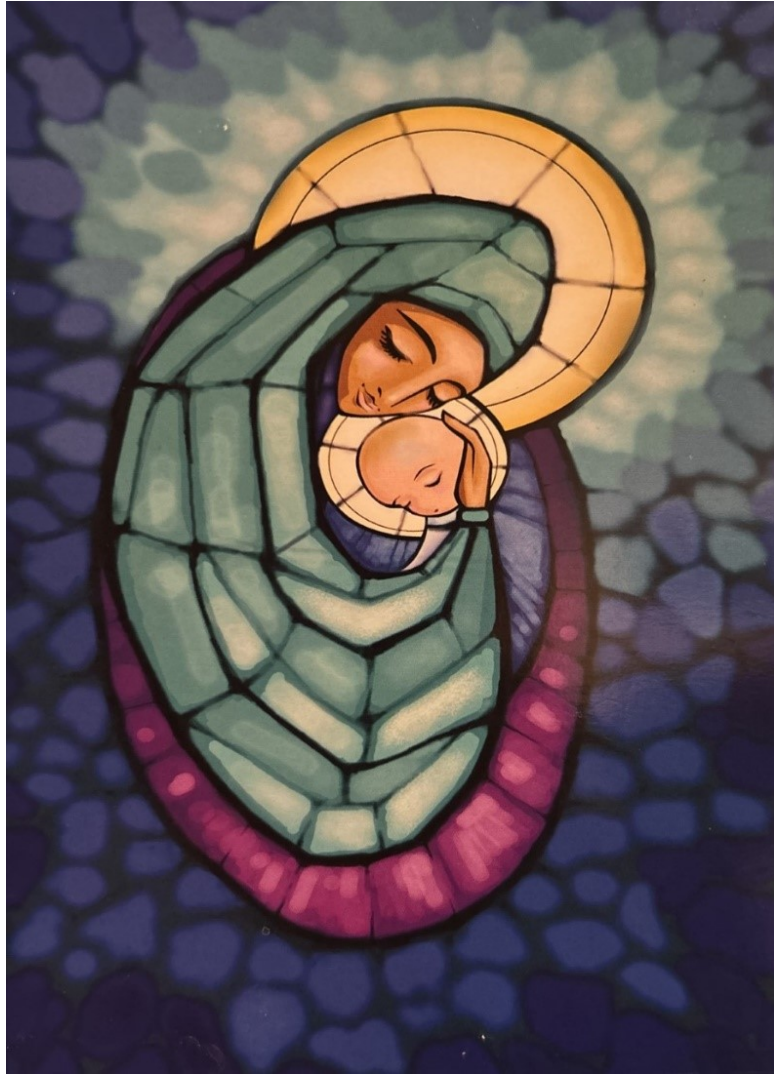
If you click on the link in the description, it will take you to the information about the course.  
If you want to book, click the 'To book' link, which will take you directly to our booking website.

## March 2026

| Course title  | Date   | To book   |
|---|--|---|
| Staff Meeting – The Stress Proof Brain: Practical Tools for Wellbeing & Self-Care<br><br>With Hugo Metcalfe | Monday 2 <sup>nd</sup> March 2026<br><br>3:45pm-4:45pm   | <a href="https://www.bcpp.org.uk/events/25-staff-stress">https://www.bcpp.org.uk/events/25-staff-stress</a>                       |
| Interventions vs Outerventions<br><br>With Ruth Swailes   | Tuesday 10 <sup>th</sup> March 2026<br><br>1:00pm-3:00pm   | <a href="https://www.bcpp.org.uk/events/25-interventions">https://www.bcpp.org.uk/events/25-interventions</a>                     |
| Writing Moderation<br><br>With Susie Spolander  | Thursday 12 <sup>th</sup> March 2026<br><br>Face to face All day   | <a href="https://www.bcpp.org.uk/events/25-writing-moderation">https://www.bcpp.org.uk/events/25-writing-moderation</a>           |
| HT Support and Development Group day 4 of 5<br><br>With Clare Cheetham                                      | Friday 13 <sup>th</sup> March 2026<br><br>9:30am-12:30pm   | <a href="https://www.bcpp.org.uk/events/25-head-support-group-4">https://www.bcpp.org.uk/events/25-head-support-group-4</a>       |
| Science Leaders' Support and Development Group day 4 of 6<br><br>With Kate Redhead                          | Monday 16 <sup>th</sup> March 2026<br><br>2:30pm-3:30pm  | <a href="https://www.bcpp.org.uk/events/25-science-support-group-4">https://www.bcpp.org.uk/events/25-science-support-group-4</a> |
| School Development Planning and demonstrating impact<br><br>With Dr Bogusia Matusiak-Varley                 | Tuesday 17 <sup>th</sup> March 2026<br><br>Zoom 9:00am-12:00pm   | <a href="https://www.bcpp.org.uk/events/25-sdp-planning">https://www.bcpp.org.uk/events/25-sdp-planning</a>                       |
| English Leaders' Support and Development Group<br><br>With Susie Spolander                                  | Wednesday 18 <sup>th</sup> March 2026<br><br>2:00pm-3:30pm   | <a href="https://www.bcpp.org.uk/events/25-english-support-group-4">https://www.bcpp.org.uk/events/25-english-support-group-4</a> |
| SENDSCO Support and Development Group<br><br>Session 2 of 3<br><br>With Matt McArthur                       | Thursday 19 <sup>th</sup> March 2026<br><br>Future dates:<br>Thursday 18 <sup>th</sup> June 2026<br><br>Time 1:30pm-5:30pm | <a href="https://www.bcpp.org.uk/events/25-senco-support-group-2">https://www.bcpp.org.uk/events/25-senco-support-group-2</a>     |
| Headteacher Get together<br><br>At Priory Tennis Club   | Friday 20 <sup>th</sup> March 2026<br><br>9:00am-1:00pm  | <a href="https://www.bcpp.org.uk/events/25-head-face2face-2">https://www.bcpp.org.uk/events/25-head-face2face-2</a>               |



# Rosary Term



(Summer 1)

# ROSARY TERM

## (SUMMER 1)

### April 2026

#### **Engaging Pupils in Play – session 3 of 3**

**With Helen Guest**

**Tuesday 28th April 2026**

10:30am-11:30am

Zoom

For: All staff who support pupils at lunchtimes.

Have you noticed that children's behaviour can become more challenging when they are bored or there is 'nothing to do'?

In this training session, we'll explore the huge benefits of engaging children in positive play - what that means, and how to do it.

We'll show you tried and tested techniques and give ideas on how anyone in your school can get children engaged in meaningful play and how that has a huge impact on reducing stress for everyone at Lunchtimes.

To Book: <https://www.bcpp.org.uk/events/25-pupils-in-play>

#### **Director's note:**

*Great support for your wonderful lunchtime team.*

**Staff to be booked on:**

**Cover arrangements in school:**



# ROSARY TERM

## (SUMMER 1)

# May 2026

### **Headteachers Mass:**

### **Celebrating 30 Years of the Catholic Primary Partnership**

### **With Bishop Tim Menezes**

**Wednesday 20<sup>th</sup> May 2026**

11:00am

Face to face: Newman University Chapel

For: Headteachers / Principals, past headteachers, CSEL's, CEOs

Headteachers and principals are invited to join the celebration of Holy Mass with past headteachers. With Bishop Tim Menezes and One Life Music.

During the Mass we will hold serving and past staff members in our thoughts and prayers and we will remember deceased headteachers. A welcome will be given to recently appointed headteachers within the Catholic Primary Partnership.

Following the Mass a light buffet will be served.

A great opportunity for past students to visit the wonderful refurbished Newman University Campus .

To book: <https://www.bcpp.org.uk/events/25-head-mass>

### **Director's note:**

*Invest in your own spiritual formation, take time out to join the celebration of Holy Mass and enjoy light refreshments afterwards with the opportunity to talk to past, present and new school leaders.*

### **Staff to be booked on:**

### **Cover arrangements in school:**



# Rosary Term

## CPDF at a glance

If you click on the link in the description, it will take you to the information about the course.  
If you want to book, click the 'To book' link, which will take you directly to our booking website.

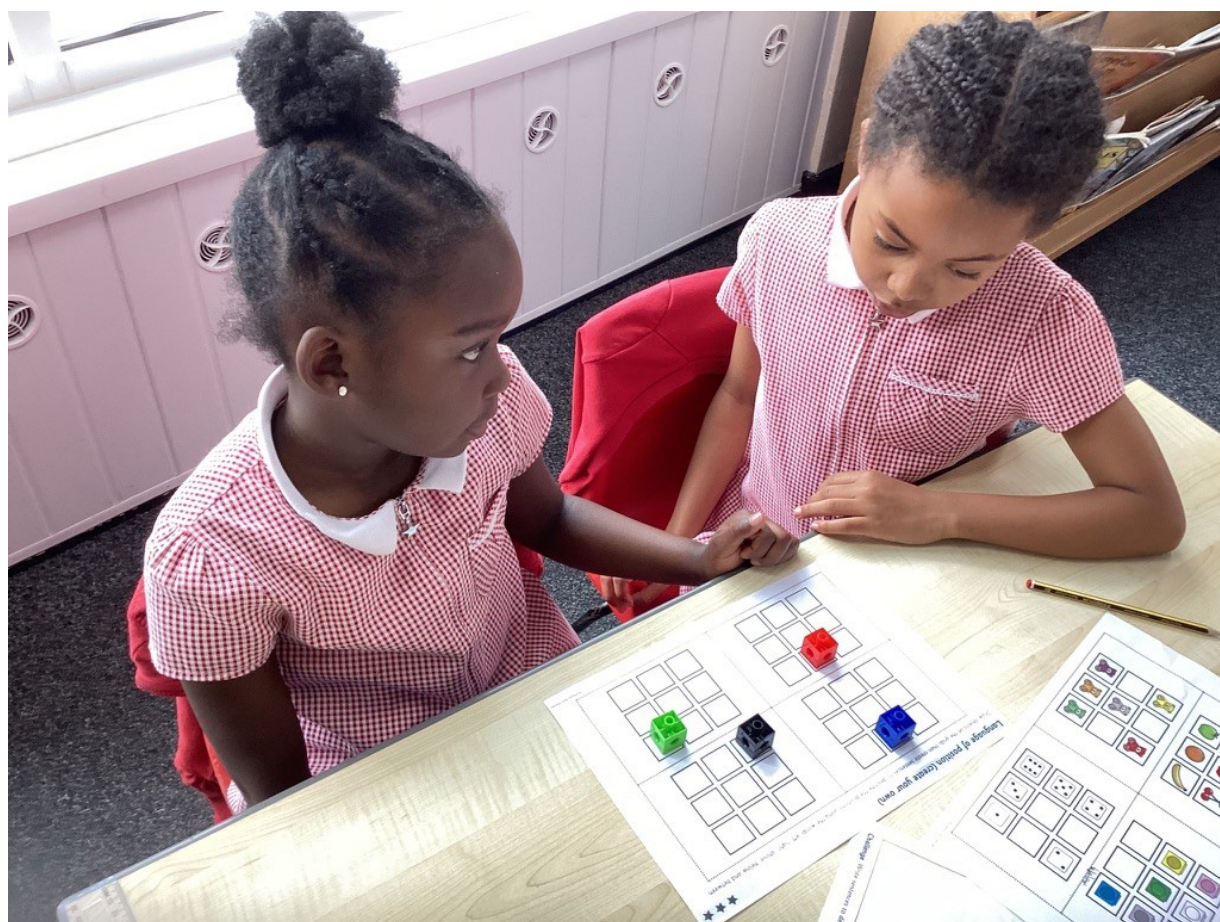
## April 2026

| Course title  | Date   | To book   |
|---|--|---|
| Learning in EYFS & KS1, Providing Effective Support<br><br>With Rachel Wilks                                | Monday 20th April 2026<br><br>1:00pm-3:00pm                | <a href="https://www.bcpp.org.uk/events/25-learning-eyfs-ks1">https://www.bcpp.org.uk/events/25-learning-eyfs-ks1</a>             |
| Confidently Teach Music: Simple and Fun Strategies for Every Classroom Teacher<br><br>With 'Sing Education' | Tuesday 21 <sup>st</sup> April 2026<br><br>1:30pm-3:00pm   | <a href="https://www.bcpp.org.uk/events/25-teaching-music">https://www.bcpp.org.uk/events/25-teaching-music</a>                   |
| PE Leaders' Support and Development Group<br><br>Dan Wilson From Beyond the Physical                        | Thursday 23 <sup>rd</sup> April 2026<br><br>1:30pm-3:30pm  | <a href="https://www.bcpp.org.uk/events/25-pe-support-group-3">https://www.bcpp.org.uk/events/25-pe-support-group-3</a>           |
| Science Leaders' Support and Development Group day 5 of 6<br><br>With Kate Redhead                          | Monday 27 <sup>th</sup> April 2026<br><br>2:00pm-3:30pm    | <a href="https://www.bcpp.org.uk/events/25-science-support-group-5">https://www.bcpp.org.uk/events/25-science-support-group-5</a> |
| Engaging Pupils in Play<br><br>With Helen Guest   | Tuesday 28 <sup>th</sup> April 2026<br><br>10:30am-11:30am | <a href="https://www.bcpp.org.uk/events/25-pupils-in-play">https://www.bcpp.org.uk/events/25-pupils-in-play</a>                   |
| Pathological Demand Avoidance (PDA)<br><br>With Helen Guest   | Tuesday 28 <sup>th</sup> April 2026<br><br>1:30pm-3:30pm   | <a href="https://www.bcpp.org.uk/events/25-pda">https://www.bcpp.org.uk/events/25-pda</a>   |
| Maths Leaders' Support and Development Group<br><br>With Nathan Crook                                       | Wednesday 29 <sup>th</sup> April 2026<br><br>1:30pm-4:00pm | <a href="https://www.bcpp.org.uk/events/25-maths-support-group-3">https://www.bcpp.org.uk/events/25-maths-support-group-3</a>     |
| HT Support and Development Group day 5 of 5<br><br>With Clare Cheetham                                      | Thursday 30 <sup>th</sup> April 2026<br><br>9:30am-12:30pm | <a href="https://www.bcpp.org.uk/events/25-head-support-group-5">https://www.bcpp.org.uk/events/25-head-support-group-5</a>       |



# May 2026

| Course title  | Date  | To book   |
|---|---|---|
| EYFS Leader Support Group<br><br>With Ruth Swailes  | Thursday 7 <sup>th</sup> May 2026<br><br>1:15pm-2:45pm      | <a href="https://www.bcpp.org.uk/events/25-eyfs-support-group-3">https://www.bcpp.org.uk/events/25-eyfs-support-group-3</a> |
| Mass to Celebrate 30 years of Catholic Primary Partnership<br><br>At Newman University Chapel | Wednesday 20 <sup>th</sup> May 2026<br><br>11.00am – 2.00pm | <a href="https://www.bcpp.org.uk/events/25-head-mass">https://www.bcpp.org.uk/events/25-head-mass</a>                       |





# Trinity Term



x

(Summer 2)

# TRINITY TERM

## (SUMMER 2)

### June 2026

#### **HT Residential**

**Thursday 4<sup>th</sup> and Friday 5<sup>th</sup>  
June 2026**

(Friday is for your own personal reflection)

Face to face at Lea Marston Hotel, Haunch Ln, Lea Marston, Sutton Coldfield B76 0BY

For: Headteachers and Principals

Get yourself booked on. This is a fabulous opportunity to spend time with other heads. You need this opportunity to be with other heads, to just 'be.' You can book your Deputy on for an additional charge. (Have a chat to Sarah if this is what you would like to do.)

Guest Speaker Helen Dos Santos from Horizon Coaching

To book:

<https://www.bcpp.org.uk/events/25-head-residential>

#### **Director's note:**

*Headteachers, this is for YOU! Get booked on. You need time away from school to think, to reflect, to decide on next steps. Book on today!*

*If you would like to book your DHT on with you, contact Sarah. There will be a charge for DHT's. We cannot guarantee DHT place availability. Get in quick.*

*NB: If you cancel a place within 2 weeks of the residential, you will be charged full price.*

#### **Staff to be booked on:**

#### **Cover arrangements in school:**



# Trinity Term CPDF at a glance

If you click on the link in the description, it will take you to the information about the course.  
If you want to book, click the 'To book' link, which will take you directly to our booking website.

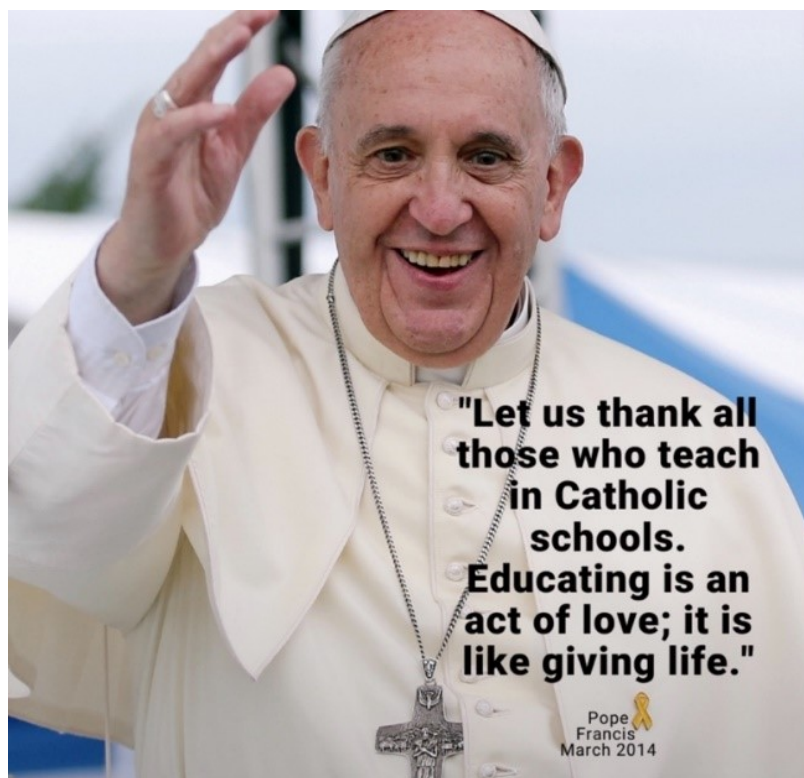
## June 2026

| Course title   | Date  | To book   |
|--|---|---|
| History- linking together the histories we teach<br><br>With Stuart Tiffany (Mr T does history)                  | Thursday, 3 <sup>rd</sup> June 2026<br><br>9:00am-12:00pm                 | <a href="https://www.bcpp.org.uk/events/25-history">https://www.bcpp.org.uk/events/25-history</a>                                     |
| Headteacher Residential<br><br>Lea Marston Hotel   | Thursday 4 <sup>th</sup> and Friday 5 <sup>th</sup> June 2026<br>Full Day | <a href="https://www.bcpp.org.uk/events/25-head-residential">https://www.bcpp.org.uk/events/25-head-residential</a>                   |
| DRB Leadership Briefing – Session 3 of 3<br><br>With Andrew Pilmore  | Monday 8 <sup>th</sup> June 2026<br><br>10:00am-12:30pm                   | <a href="https://www.bcpp.org.uk/events/25-drb-briefing-3">https://www.bcpp.org.uk/events/25-drb-briefing-3</a>                       |
| Provision in EYFS & KS1<br>Getting it Right<br><br>With Rachel Wilkes  | Tuesday, 9 <sup>th</sup> June 2026<br><br>1:00pm-3:00pm                   | <a href="https://www.bcpp.org.uk/events/25-eyfs-provision">https://www.bcpp.org.uk/events/25-eyfs-provision</a>                       |
| English Leaders' Support and Development Group – Session 5 of 5<br><br>With Susie Spolander                      | Thursday 11 <sup>th</sup> June 2026<br><br>2:00pm-3:30pm                  | <a href="https://www.bcpp.org.uk/events/25-english-support-group-5">https://www.bcpp.org.uk/events/25-english-support-group-5</a>     |
| Computing Leaders' Support and Development Group – Session 3 of 3<br><br>With Sharon Cufflin and Vikki Woodfield | Monday 15 <sup>th</sup> June 2026<br><br>1:15pm-3:15pm                    | <a href="https://www.bcpp.org.uk/events/25-computing-support-group-3">https://www.bcpp.org.uk/events/25-computing-support-group-3</a> |
| Science Leaders' Support and Development Group day 6 of 6<br><br>With Kate Redhead                               | Tuesday 16 <sup>th</sup> June 2026<br><br>2:00pm-3:30pm                   | <a href="https://www.bcpp.org.uk/events/25-science-support-group-6">https://www.bcpp.org.uk/events/25-science-support-group-6</a>     |
| Identifying School Development Priorities<br><br>With Clare Cheetham   | Thursday 18 <sup>th</sup> June 2026<br><br>9:30am-12.00pm                 | <a href="https://www.bcpp.org.uk/events/25-sdp-priorities">https://www.bcpp.org.uk/events/25-sdp-priorities</a>                       |
| SENDSCO Support and Development Group - Session 3 of 3<br><br>With Matt McArthur                                 | Thursday 18 <sup>th</sup> June 2026<br><br>1:30pm-5:30pm                  | <a href="https://www.bcpp.org.uk/events/25-senco-support-group-3">https://www.bcpp.org.uk/events/25-senco-support-group-3</a>         |

# July 2026

| Course title  | Date  | To book   |
|---|---|---|
| Writing the School Development Plan<br>Clare Cheetham | Thursday 2 <sup>nd</sup> July 2026<br>9:30am-3:30pm | <a href="https://www.bcpp.org.uk/events/25-sdp-writing">https://www.bcpp.org.uk/events/25-sdp-writing</a>           |
| Maths Moderation<br>With Helen Owens                  | Friday 10 <sup>th</sup> July 2026<br>9:00am-3:30pm  | <a href="https://www.bcpp.org.uk/events/25-maths-moderation">https://www.bcpp.org.uk/events/25-maths-moderation</a> |

| Colour Code Key                    |  |
|------------------------------------|--|
| <b>Catholic Life</b>               |  |
| <b>Leadership &amp; Management</b> |  |
| <b>Curriculum</b>                  |  |
| <b>Governors</b>                   |  |
| <b>Staff Meeting</b>               |  |



## *The small print (it is not actually small)*

- Always get approval from the person responsible for the inset in your school before booking online.
- One-form entry schools get one free place on every course. Two-form entry schools get two free places on every course. Three-form entry schools get three places on every course.
- Additional places can be purchased. £25 for online and £40 for face-to-face.
- Governor CPDF places are £15 each.
- Some courses have additional charges, as stated in the CPDF plan.
- Failure to attend a pre-booked place will incur a charge. (£40 for a Zoom course and £60 for a Face-to-Face course.)
- Failure to attend residential or cancellation less than 2 weeks before will result in full charge.
- Cancellation of a place must take place 5 working days before session or charge incurred.
- Zoom links will be sent to delegates in advance of CPDF, please do a tech check before the day and contact us if any issues.
- **Please ensure your computer has a working camera AND a working microphone.**
- Places to be booked via the website. Any problems, questions, queries  
Email [s.cope@newman.ac.uk](mailto:s.cope@newman.ac.uk).
- Not turning your camera on (when we know you have one) is just rude. There, we said it.  
**Please be fully present and attentive in sessions.**

Do not hesitate to get in touch if you have any questions.

Telephone: 0121 476 3415

Email: [s.cope@newman.ac.uk](mailto:s.cope@newman.ac.uk)  
[j.tallon@newman.ac.uk](mailto:j.tallon@newman.ac.uk)